

Casc Publication Handbook

CWE Market Coupling

| | | |
|----------------|--------------------------------|---|
| Version | 1.0 | |
| Date | 17-04-2015 | |
| Status | <input type="checkbox"/> Draft | <input checked="" type="checkbox"/> Final |

Contents

| | |
|---|-----------|
| 1 Pre-coupling operational data (D-1) | 3 |
| 1.1. Graphical views | 3 |
| 1.1.1. Market View | 3 |
| 1.1.2. Market graphs | 4 |
| 1.1.3. CWE map | 4 |
| 1.1.4. Border Data Overview | 5 |
| 1.2. Raw network data | 6 |
| 1.2.1. PTFDs (Early Publication) | 6 |
| 1.2.2. Long Term Nominations (LTN) | 7 |
| 1.2.3. PTFDs | 7 |
| 1.2.4. ATCs | 8 |
| 1.2.5. Max net pos | 9 |
| 1.2.6. Max exchanges (Maxbex) | 9 |
| 1.2.7. Shadow Auction ATC | 10 |
| 2 Post-coupling operational data (D-1) | 11 |
| 2.1. Net Position | 11 |
| 2.2. Allocated Capacities | 11 |
| 2.3. Price Spread | 12 |
| 2.4. Intraday ATC | 13 |
| 2.5. Congestion Income | 13 |
| 3 Additional data publication (D+2) | 14 |
| 3.1. Aggregated D2CF data | 14 |
| 3.2. Refprog | 14 |
| 3.3. All CBCO Fixed Label | 15 |
| 4 CASC Utility Tool Web Service | 16 |
| 4.1. ASMX Service | 16 |
| 4.2. SVC Service | 16 |

1 Pre-coupling operational data (D-1)

1.1. Graphical views

1.1.1. Market View

Please note that the all data presented in this document is available through one single platform which is the CASC Utility Tool. In the last section you will find information on how to get access through the web service.

Publication day or time is also indicated for each item: please consider that “D” stands for the delivery day; therefore, “D-1” stands for the Day-Ahead on which most of the data is provided as part of the market coupling process and finally “D+2”

| Reference time: | 1) Check volume (interactive module) | | | 2) Max volume (information module) | | |
|----------------------|---|------|------------------------------------|--|---------------|---------------|
| date: 2014-10-22 | Here you can check the simultaneous execution of trading volumes of the markets involved in the CWE Market Coupling | | | Here you can find the maximal trade volumes (MWh/h) which can be physically transported between two Hubs under the condition that no other trade is executed between other Hubs. | | |
| hour: 1 | | | | | | |
| HUB TO HUB EXCHANGES | Hub-to-Hub trade in MWh/h (please insert values) | | Test 1: hub to hub inside FB space | | direction --> | direction <-- |
| | DE=>BE | 100 | Trades feasible | | DE=>BE | 4225 |
| | DE=>NL | 400 | | | DE=>NL | 3917 |
| | DE=>FR | 333 | | | DE=>FR | 3422 |
| | NL=>BE | 345 | | | NL=>BE | 3368 |
| | NL=>FR | 1222 | | | NL=>FR | 3422 |
| | BE=>FR | 123 | | | BE=>FR | 3395 |
| HUB POSITION | Hub Positions trade in MWh/h (please insert values) | | Test 1: sum hub positions = 0 | Test 2: hub positions inside FB space | export | import |
| | DE | 0 | OK | Trades feasible | DE | -4911 |
| | BE | 0 | | | BE | -3395 |
| | FR | 0 | | | FR | -5549 |
| | NL | 0 | | | NL | -3575 |

Figure 1: Screenshot of the “Market View” tab

The “Market View” tab is split into 2 sections:

- Check volume: the user can insert volumes of commercial trades (in terms of hub-to-hub exchanges or hub net export positions) in order to test their feasibilities. Please note that those feasibility checks are performed on all 24 hours. This implies that if Test 2 indicates ‘Constrained Transmission System’, at least in one of the 24 hours a constraint was violated.
- Max volume: this section gathers the information of the tabs “Max net pos” and “Max exchanges (Max-bex)”.

Please note that if one changes the value of the date picker, it will update the figures of all the tabs of the excel file according to the chosen date.

Publication time: 10.30 am (D-1)

1.1.2. Market graphs

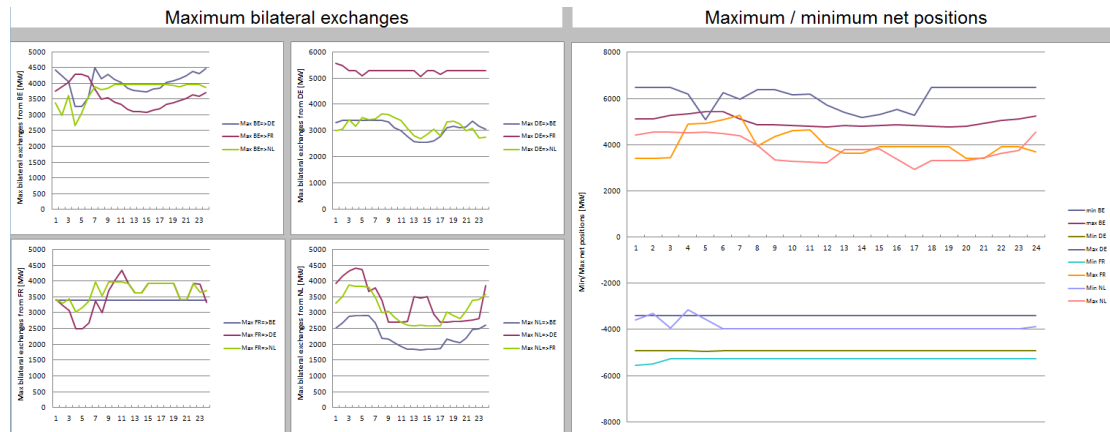


Figure 2: Screenshot of the "Market graphs" tab

The "Market graphs" tab gathers the graphs representing the Flow-Based indicators of the tabs "Max net pos" and "Max exchanges (Maxbex)" for the 24 hours of the selected day.

Publication time: 10.30 am (D-1)

1.1.3. CWE map

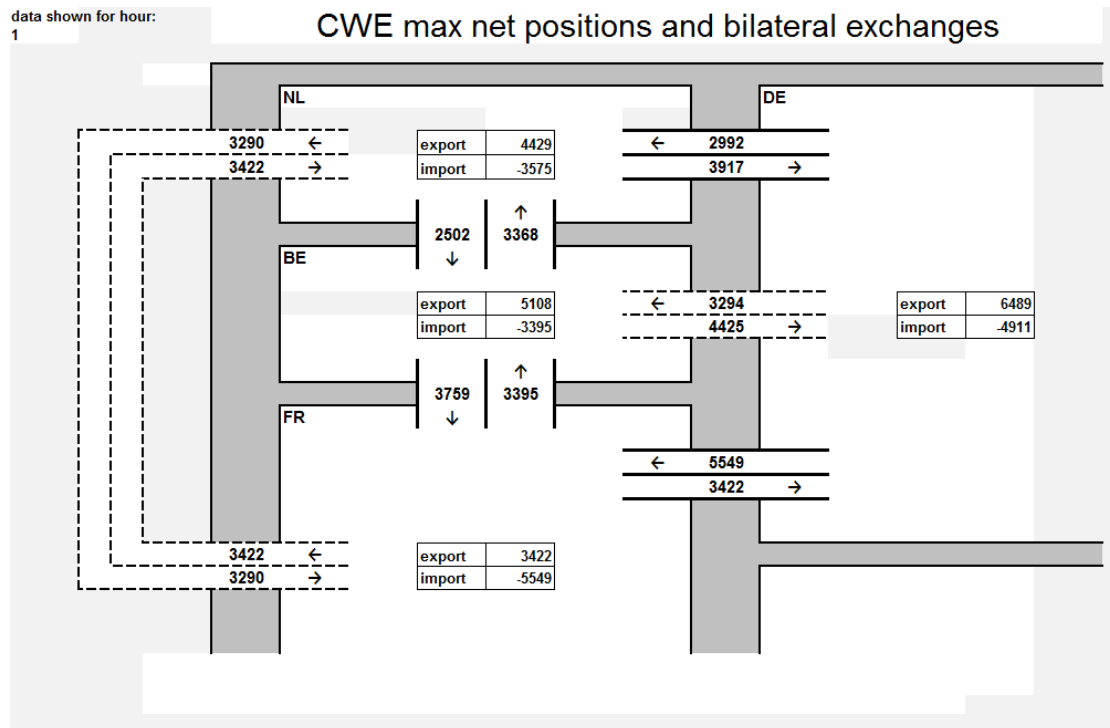


Figure 3: Screenshot of the "CWE map" tab

The "CWE map" tab displays the indicators of the final Flow-Based matrix in a different manner: it shows the maximum bilateral exchanges of each border and the min/max net positions of each hub on a map representing the CWE configuration.

Publication time: 10.30 am (D-1)

1.1.4. Border Data Overview

| Date: | | 2015-03-04 | | | | | | |
|---------|----------|---|----------------------|-----------------------|----------|-------------------------|-------------------|--|
| Border: | | NL-BE | | | | | | |
| | | Choosing another Business Day on this sheet will also update the following sheets: ATCs, Allocated Capacities, Price spread, Congestion Income, LTN, Shadow Auction ATC and ID ATC | | | | | | |
| Hour | ATC (MW) | BEC (MW) | Price Spread (€/MWh) | Congestion Income (€) | LTN (MW) | Shadow Auction ATC (MW) | Intraday ATC (MW) | |
| 1 | #N/A | 288,9 | 0 | #N/A | 52 | 924 | 850 | |
| 2 | #N/A | 337,7 | 0 | #N/A | 52 | 950 | 818 | |
| 3 | #N/A | 325,9 | 0 | #N/A | 52 | 919 | 775 | |
| 4 | #N/A | 503,6 | 0 | #N/A | 52 | 1066 | 934 | |
| 5 | #N/A | 620,6 | 0 | #N/A | 52 | 1140 | 996 | |
| 6 | #N/A | 657,6 | 0 | #N/A | 52 | 1022 | 833 | |
| 7 | #N/A | 753,1 | 0 | #N/A | 52 | 1227 | 880 | |
| 8 | #N/A | 499 | 0 | #N/A | 52 | 850 | 761 | |
| 9 | #N/A | 427,9 | 0 | #N/A | 52 | 727 | 418 | |
| 10 | #N/A | 369,8 | 0 | #N/A | 52 | 727 | 591 | |
| 11 | #N/A | 389,9 | 0 | #N/A | 52 | 729 | 309 | |
| 12 | #N/A | 287,1 | 0,5 | #N/A | 52 | 735 | 0 | |
| 13 | #N/A | 287,5 | 0,55 | #N/A | 52 | 737 | 0 | |
| 14 | #N/A | 287,7 | 0,6 | #N/A | 52 | 738 | 0 | |
| 15 | #N/A | 262,7 | 0,3 | #N/A | 52 | 735 | 0 | |
| 16 | #N/A | 300,4 | 0,36 | #N/A | 52 | 853 | 0 | |
| 17 | #N/A | 351,5 | 0 | #N/A | 52 | 957 | 599 | |
| 18 | #N/A | 415,9 | 0,12 | #N/A | 52 | 983 | 0 | |
| 19 | #N/A | 345,3 | 0,64 | #N/A | 52 | 1064 | 0 | |
| 20 | #N/A | 460,9 | 0 | #N/A | 52 | 936 | 275 | |
| 21 | #N/A | 336,9 | 1,43 | #N/A | 52 | 898 | 0 | |
| 22 | #N/A | 369,7 | 0,76 | #N/A | 52 | 1010 | 0 | |
| 23 | #N/A | 336,4 | 0,73 | #N/A | 52 | 949 | 0 | |
| 24 | #N/A | 328,1 | 0 | #N/A | 52 | 1129 | 748 | |

Figure 4: Screenshot of the "Border Data Overview" tab with a CWE border

This tab gathers the general pieces of information for a selected border for each hour of a market coupling date:

- The ATC in MW offered for the Day-ahead market coupling (for the non-CWE borders);
- The allocated capacity (or BEC¹) in MW after market coupling;
- The Price Spread in €/MWh;
- The Congestion Income in €;
- The nominated volume of the long term allocated product (LTN) in MW;
- The Shadow Auction ATC, being the ATC that would be provided to a shadow auction mechanism, in MW;
- The Intraday ATC, being the left-over capacity after the FBMC expressed as **initial** ATC, in MW.

Please note that for the CWE internal borders, the ATCs and Congestion Income are not available on a border basis (see Figure 4) and for the other borders, the long term nominations, the Shadow Auction ATCs and the intraday ATCs will not be available (see Figure 5).

¹ Bilateral Exchange Computation

| Date: | | 2015-03-04 | | | | | | |
|---|----------|------------|----------------------|-----------------------|----------|-------------------------|-------------------|------|
| Border: | | FR-IT | | | | | | |
| Choosing another Business Day on this sheet will also update the following sheets: ATCs, Allocated Capacities, Price spread, Congestion Income, LTN, Shadow Auction ATC and ID ATC | | | | | | | | |
| Hour | ATC (MW) | BEC (MW) | Price Spread (€/MWh) | Congestion Income (€) | LTN (MW) | Shadow Auction ATC (MW) | Intraday ATC (MW) | |
| 1 | 2529 | 0 | -33,31 | 0 | #N/A | #N/A | #N/A | #N/A |
| 2 | 2529 | 0 | -32,36 | 0 | #N/A | #N/A | #N/A | #N/A |
| 3 | 2529 | 0 | -32,05 | 0 | #N/A | #N/A | #N/A | #N/A |
| 4 | 2529 | 0 | -34,14 | 0 | #N/A | #N/A | #N/A | #N/A |
| 5 | 2529 | 0 | -35,66 | 0 | #N/A | #N/A | #N/A | #N/A |
| 6 | 2529 | 0 | -38 | 0 | #N/A | #N/A | #N/A | #N/A |
| 7 | 2529 | 0 | -39,87 | 0 | #N/A | #N/A | #N/A | #N/A |
| 8 | 2684 | 0 | -42,74 | 0 | #N/A | #N/A | #N/A | #N/A |
| 9 | 2624 | 0 | -43,24 | 0 | #N/A | #N/A | #N/A | #N/A |
| 10 | 2624 | 0 | -43,99 | 0 | #N/A | #N/A | #N/A | #N/A |
| 11 | 2624 | 0 | -44,29 | 0 | #N/A | #N/A | #N/A | #N/A |
| 12 | 2624 | 0 | -45,19 | 0 | #N/A | #N/A | #N/A | #N/A |
| 13 | 2624 | 0 | -45,35 | 0 | #N/A | #N/A | #N/A | #N/A |
| 14 | 2624 | 0 | -44,25 | 0 | #N/A | #N/A | #N/A | #N/A |
| 15 | 2624 | 0 | -44 | 0 | #N/A | #N/A | #N/A | #N/A |
| 16 | 2624 | 0 | -43,2 | 0 | #N/A | #N/A | #N/A | #N/A |
| 17 | 2624 | 0 | -42,45 | 0 | #N/A | #N/A | #N/A | #N/A |
| 18 | 2624 | 0 | -43,12 | 0 | #N/A | #N/A | #N/A | #N/A |
| 19 | 2624 | 0 | -41,56 | 0 | #N/A | #N/A | #N/A | #N/A |
| 20 | 2624 | 0 | -37,14 | 0 | #N/A | #N/A | #N/A | #N/A |
| 21 | 2684 | 0 | -39,03 | 0 | #N/A | #N/A | #N/A | #N/A |
| 22 | 2684 | 0 | -34,03 | 0 | #N/A | #N/A | #N/A | #N/A |
| 23 | 2684 | 0 | -33,42 | 0 | #N/A | #N/A | #N/A | #N/A |
| 24 | 2529 | 0 | -29,92 | 0 | #N/A | #N/A | #N/A | #N/A |

Figure 5: Screenshot of the "Border Data Overview" tab with a non-CWE border

Publication time: As soon as data is available (D-1)

1.2. Raw network data

1.2.1. PTDFs (Early Publication)

| | | BE-hub (MW) | DE-hub (MW) | FR-hub (MW) | NL-hub (MW) | Sum | | |
|--------------------|----------|-------------|-------------|-------------|-------------|-----------------|---------------------------|-------------------|
| Test Hub to Hub | | 0 | 0 | 0 | 0 | 0 | | |
| Test Hub Positions | | 0 | 0 | 0 | 0 | 0 | | |
| ID | BE-hub | DE-hub | FR-hub | NL-hub | RAM (MW) | Test Hub to Hub | # of constraints violated | Test Hub position |
| 80 | -0,08423 | -0,01459 | -0,10701 | -0,05398 | 497 | 0 | 0 | 0 |
| 97 | -0,15795 | 0,01049 | -0,09141 | 0,15795 | 726 | 0 | 0 | 0 |
| 109 | 0,04838 | 0,00925 | -0,09857 | 0,08098 | 743 | 0 | 0 | 0 |
| 123 | 0,09587 | 0,00208 | -0,00426 | 0,02121 | 239 | 0 | 0 | 0 |
| 124 | -0,14365 | 0,0104 | -0,09535 | 0,1284 | 663 | 0 | 0 | 0 |
| 140 | -0,27609 | -0,20646 | -0,29888 | -0,24585 | 497 | 0 | 0 | 0 |
| 143 | 0 | -1 | 0 | 0 | 5483 | 0 | 0 | 0 |
| 161 | -0,27778 | 0,01117 | -0,0961 | 0,06315 | 989 | 0 | 0 | 0 |
| 177 | 0,15508 | -0,02833 | 0,19883 | 0,01624 | 1360 | 0 | 0 | 0 |
| 211 | 0,2044 | -0,00862 | 0,07088 | -0,0451 | 1125 | 0 | 0 | 0 |
| 231 | -0,15277 | 0,00811 | -0,07644 | 0,04832 | 630 | 0 | 0 | 0 |
| hour 1 | 237 | 0 | 0 | -1 | 3544 | 0 | 0 | 0 |
| 284 | 0,09114 | 0,00082 | 0,00254 | 0,01021 | 281 | 0 | 0 | 0 |
| 298 | -1 | 0 | 0 | 0 | 3836 | 0 | 0 | 0 |
| 305 | 0 | 0 | -1 | 0 | 5539 | 0 | 0 | 0 |
| 306 | 0,0927 | 0,00232 | -0,00975 | 0,02182 | 243 | 0 | 0 | 0 |
| 329 | -0,19423 | 0,00188 | -0,07626 | -0,22443 | 1016 | 0 | 0 | 0 |
| 341 | 0,24616 | 0,00879 | -0,07728 | 0,06052 | 785 | 0 | 0 | 0 |
| 347 | 0 | 1 | 0 | 0 | 5917 | 0 | 0 | 0 |
| 370 | 0 | 0 | 0 | 1 | 4956 | 0 | 0 | 0 |
| 390 | 0,26112 | 0,00911 | -0,06754 | 0,07572 | 805 | 0 | 0 | 0 |
| 397 | -0,06363 | 0,00385 | -0,03906 | -0,18106 | 687 | 0 | 0 | 0 |
| 422 | 0 | 0 | 1 | 0 | 4014 | 0 | 0 | 0 |

Figure 6: Screenshot of the "PTDFs Early Implementation" tab

Description:

This tab contains the presolved Flow-Based matrices of the selected day **before long term nominations** (24 FB matrices). In each FB matrix, one can find:

- one line per presolved CBCO² with an anonymous ID
- one column per hub with the PTDF³_{hub} value per CBCO
- one column with the Remaining Available Margin (RAM) per CBCO

These **FB matrices are not the final values** used as input network data for the market coupling process.

² Critical Branch Critical Outage

³ Power Transfer Distribution Factor

In addition, the two columns “Test Hub to Hub” and “Test Hub positions” indicate whether a CBCO is constrained with the respective set of “Hub to Hub exchanges” or ”Hub positions” (0 means no violation and 1 means violation).

Publication time: 08.00 am (D-1)

1.2.2. Long Term Nominations (LTN)

| Date: 2015-03-04 | | | | | | | | | |
|------------------------|-------|-------|-------|-------|-------|-------|-------|-------|--|
| LT Nominations (in MW) | | | | | | | | | |
| Hour | BE-NL | NL-BE | DE-NL | NL-DE | BE-FR | FR-BE | FR-DE | DE-FR | |
| 1 | 0 | 52 | 758 | 0 | 0 | 612 | 0 | 325 | |
| 2 | 0 | 52 | 758 | 0 | 0 | 612 | 0 | 325 | |
| 3 | 0 | 52 | 758 | 0 | 0 | 612 | 0 | 325 | |
| 4 | 0 | 52 | 758 | 0 | 0 | 612 | 0 | 325 | |
| 5 | 0 | 52 | 758 | 0 | 0 | 612 | 0 | 325 | |
| 6 | 0 | 52 | 758 | 0 | 0 | 612 | 0 | 325 | |
| 7 | 0 | 52 | 758 | 0 | 0 | 612 | 0 | 325 | |
| 8 | 0 | 52 | 758 | 0 | 0 | 612 | 0 | 325 | |
| 9 | 0 | 52 | 758 | 0 | 0 | 612 | 0 | 325 | |
| 10 | 0 | 52 | 758 | 0 | 0 | 612 | 0 | 325 | |
| 11 | 0 | 52 | 758 | 0 | 0 | 612 | 0 | 325 | |
| 12 | 0 | 52 | 758 | 0 | 0 | 612 | 0 | 325 | |
| 13 | 0 | 52 | 758 | 0 | 0 | 612 | 0 | 325 | |
| 14 | 0 | 52 | 758 | 0 | 0 | 612 | 0 | 325 | |
| 15 | 0 | 52 | 758 | 0 | 0 | 612 | 0 | 325 | |
| 16 | 0 | 52 | 758 | 0 | 0 | 612 | 0 | 325 | |
| 17 | 0 | 52 | 758 | 0 | 0 | 612 | 0 | 325 | |
| 18 | 0 | 52 | 758 | 0 | 0 | 612 | 0 | 325 | |
| 19 | 0 | 52 | 758 | 0 | 0 | 612 | 0 | 325 | |
| 20 | 0 | 52 | 758 | 0 | 0 | 612 | 0 | 325 | |
| 21 | 0 | 52 | 758 | 0 | 0 | 612 | 0 | 325 | |
| 22 | 0 | 52 | 758 | 0 | 0 | 612 | 0 | 325 | |
| 23 | 0 | 52 | 758 | 0 | 0 | 612 | 0 | 325 | |
| 24 | 0 | 52 | 758 | 0 | 0 | 612 | 0 | 325 | |

Figure 7: Screenshot of the “LTN” tab

Description:

The first column indicates the hour of the nomination (24 lines overall). The next eight columns represent the nominated capacity in MW per border in the two directions.

Publication time: 10.30 am (D-1)

1.2.3. PTDFs

| | | BE-hub (MW) | DE-hub (MW) | FR-hub (MW) | NL-hub (MW) | Sum | | | |
|--------------------|--------|-------------|-------------|-------------|-------------|-----------------|---------------------------|--------------------|--|
| Test Hub to Hub | | -322 | 833 | -1678 | 1167 | 0 | | | |
| Test Hub Positions | | 0 | 0 | 0 | 0 | 0 | | | |
| ID | BE-hub | DE-hub | FR-hub | NL-hub | RAM (MW) | Test Hub to Hub | # of constraints violated | Test Hub positions | |
| hour 1 | 20 | 0.02008 | 0.1176 | 0.05621 | -0.0729 | 570 | 0 | 0 | |
| | 24 | 0 | -1 | 0 | 0 | 4911 | 0 | 0 | |
| | 50 | -0.00676 | -0.06824 | -0.0268 | 0.08954 | 618 | 0 | 0 | |
| | 87 | -0.00676 | -0.06824 | -0.0268 | 0.08954 | 618 | 0 | 0 | |
| | 93 | 0.0901 | 0.27031 | 0.16747 | 0.44528 | 914 | 0 | 0 | |
| | 101 | 0.08453 | 0.27367 | 0.17482 | 0.44631 | 914 | 0 | 0 | |
| | 112 | 0 | 0 | 1 | 0 | 3422 | 0 | 0 | |
| | 134 | -0.07119 | -0.24281 | -0.39186 | -0.14239 | 1607 | 0 | 0 | |
| | 139 | 0.03094 | 0.26375 | 0.17098 | -0.03354 | 971 | 0 | 0 | |
| | 180 | 0.02927 | 0.20466 | 0.09383 | 0.34475 | 833 | 0 | 0 | |
| | 205 | 0.0587 | 0.29955 | 0.17144 | 0.48311 | 1062 | 0 | 0 | |
| | 253 | 0.04257 | -0.03765 | -0.05188 | -0.01637 | 355 | 0 | 0 | |
| | 288 | 0 | 0 | 0 | -0.20194 | 722 | 0 | 0 | |
| | 330 | 0 | 0 | -1 | 0 | 5549 | 0 | 0 | |
| | 331 | 0.07858 | -0.08569 | -0.01073 | -0.11158 | 906 | 0 | 0 | |
| | 337 | 0.02891 | 0.2244 | 0.13105 | 0.23171 | 644 | 0 | 0 | |
| | 363 | 0.03091 | -0.14153 | 0.08722 | -0.09474 | 831 | 0 | 0 | |
| | 398 | 0 | 1 | 0 | 0 | 6489 | 0 | 0 | |
| | 407 | -0.02008 | -0.1176 | -0.05621 | -0.33098 | 1047 | 0 | 0 | |
| | 468 | -1 | 0 | 0 | 0 | 3395 | 0 | 0 | |

Figure 8: Screenshot of the “PTDFs” tab

Description:

This tab contains the presolved Flow-Based matrices of the selected day **following long term nominations** (24 FB matrices). In each FB matrix, one can find:

- one line per presolved CBCO with an anonymous ID (this ID will be updated two days after the delivery date with the fixed ID label – see chapter 2.15)
- one column per hub with the $PTDF_{hub}$ value per CBCO
- one column with the Remaining Available Margin (RAM) per CBCO

These **FB matrices are the final values** used as input network data for the market coupling process.

In addition, the two columns “Test Hub to Hub” and “Test Hub positions” indicate whether a CBCO is constrained with the respective set of “Hub to Hub exchanges” or ”Hub positions” (0 means no violation and 1 means violation).

Publication time: 10.30 am (D-1)

1.2.4. ATCs

| Date: 2014-10-22 Data publication in this section will begin only after CWE FB MC go-live. | | | | | | | | | | |
|---|-------------|-------|--------|--------|-------|-------|-------|-------|-------|-------|
| Hour | ATC (in MW) | | | | | | | | | |
| | FR-ES | ES-FR | DK1-DE | DE-DK1 | FR-IT | IT-FR | AT-IT | IT-AT | SI-IT | IT-SI |
| 1 | 7040 | 24468 | 43606 | 7163 | 2345 | 2500 | 300 | 350 | 300 | 350 |
| 2 | 6513 | 23632 | 40841 | 6469 | 7893 | 2500 | 300 | 350 | 300 | 350 |
| 3 | 6076 | 23302 | 40004 | 6030 | 900 | 2500 | 300 | 350 | 300 | 350 |
| 4 | 5889 | 23167 | 36809 | 5994 | 398 | 2500 | 300 | 350 | 300 | 350 |
| 5 | 5812 | 23041 | 35299 | 5909 | 383 | 2500 | 300 | 350 | 300 | 350 |
| 6 | 5747 | 22429 | 34982 | 5841 | 3000 | 2500 | 300 | 350 | 300 | 350 |
| 7 | 5898 | 22714 | 35575 | 5932 | 8976 | 2500 | 300 | 350 | 300 | 350 |
| 8 | 5864 | 25435 | 36131 | 6364 | 6758 | 2500 | 300 | 350 | 300 | 350 |
| 9 | 6243 | 26670 | 37982 | 6993 | 789 | 2500 | 300 | 350 | 300 | 350 |
| 10 | 6665 | 27460 | 39642 | 7540 | 678 | 2500 | 300 | 350 | 300 | 350 |
| 11 | 6971 | 27793 | 42063 | 8116 | 308 | 2500 | 300 | 350 | 300 | 350 |
| 12 | 7198 | 28632 | 43195 | 8431 | 936 | 2500 | 300 | 350 | 300 | 350 |
| 13 | 7229 | 28369 | 44788 | 8587 | 8907 | 2500 | 300 | 350 | 300 | 350 |
| 14 | 7065 | 27125 | 43417 | 8598 | 3647 | 2500 | 300 | 350 | 300 | 350 |
| 15 | 6937 | 27365 | 41278 | 8526 | 7464 | 2500 | 300 | 350 | 300 | 350 |
| 16 | 6916 | 26891 | 39832 | 8430 | 7464 | 2500 | 300 | 350 | 300 | 350 |
| 17 | 7069 | 26909 | 39748 | 8841 | 7464 | 2500 | 300 | 350 | 300 | 350 |
| 18 | 7816 | 30975 | 43254 | 9309 | 7464 | 2500 | 300 | 350 | 300 | 350 |
| 19 | 7971 | 31704 | 47895 | 9362 | 7464 | 2500 | 300 | 350 | 300 | 350 |
| 20 | 7890 | 30992 | 49485 | 9200 | 7464 | 2500 | 300 | 350 | 300 | 350 |
| 21 | 7593 | 29816 | 48078 | 8947 | 7464 | 2500 | 300 | 350 | 300 | 350 |
| 22 | 7301 | 28062 | 45541 | 8743 | 7464 | 2500 | 300 | 350 | 300 | 350 |
| 23 | 7568 | 28150 | 45130 | 8208 | 7464 | 2500 | 300 | 350 | 300 | 350 |
| 24 | 7479 | 25870 | 47515 | 7295 | 7464 | 2500 | 300 | 350 | 300 | 350 |

Figure 9: Screenshot of the “ATCs” tab

Description:

Each row represents one market coupling hour (24 rows). After the first column “hour”, the next ten columns gather the ATC values in MW for the two directions of the following borders made available for the day-ahead market coupling:

- FR-ES
- DK1-DE
- FR-IT
- AT-IT
- SI-IT

Publication time: 10.30 am (D-1)

1.2.5. Max net pos

| | Prog | BE | DE | FR | NL | hour | min BE | max BE | Min DE | Max DE | Min FR | Max FR | Min NL | Max NL |
|--------|-------|-------|----|-------|-------|------|--------|--------|--------|--------|--------|--------|--------|--------|
| hour 1 | MinBE | -3395 | | | | 1 | -3395 | 5108 | -4911 | 6489 | -5549 | 3422 | -3575 | 4429 |
| | MaxBE | 5108 | | | | 2 | -3395 | 5113 | -4911 | 6489 | -5479 | 3422 | -3291 | 4535 |
| | MinDE | | | -4911 | | 3 | -3395 | 5281 | -4911 | 6489 | -5280 | 3445 | -3939 | 4535 |
| | MaxDE | | | 6489 | | 4 | -3395 | 5330 | -4911 | 6195 | -5280 | 4904 | -3156 | 4505 |
| | MinFR | | | | -5549 | 5 | -3395 | 5444 | -4939 | 5089 | -5280 | 4915 | -3555 | 4535 |
| | MaxFR | | | | 3422 | 6 | -3395 | 5432 | -4911 | 6266 | -5280 | 5095 | -3965 | 4497 |
| | MinNL | | | | | 7 | -3395 | 5124 | -4911 | 5972 | -5280 | 5266 | -3965 | 4404 |
| | MaxNL | | | | | 8 | -3395 | 4866 | -4911 | 6375 | -5280 | 3947 | -3965 | 3963 |
| hour 2 | MinBE | -3395 | | | | 9 | -3395 | 4870 | -4911 | 6394 | -5280 | 4347 | -3965 | 3329 |
| | MaxBE | 5113 | | | | 10 | -3395 | 4829 | -4911 | 6152 | -5280 | 4607 | -3965 | 3282 |
| | MinDE | | | -4911 | | 11 | -3395 | 4813 | -4911 | 6187 | -5280 | 4632 | -3965 | 3256 |
| | MaxDE | | | 6489 | | 12 | -3395 | 4768 | -4911 | 5706 | -5280 | 3917 | -3965 | 3227 |
| | MinFR | | | | -5479 | 13 | -3395 | 4829 | -4911 | 5399 | -5280 | 3621 | -3965 | 3803 |
| | MaxFR | | | | 3422 | 14 | -3395 | 4815 | -4911 | 5180 | -5280 | 3621 | -3965 | 3778 |
| | MinNL | | | | | 15 | -3395 | 4833 | -4911 | 5308 | -5280 | 3921 | -3965 | 3807 |
| | MaxNL | | | | | 16 | -3395 | 4862 | -4911 | 5526 | -5280 | 3921 | -3965 | 3383 |
| hour 3 | MinBE | -3395 | | | | 17 | -3395 | 4825 | -4911 | 5263 | -5280 | 3921 | -3965 | 2934 |
| | MaxBE | 5281 | | | | 18 | -3395 | 4808 | -4911 | 6489 | -5280 | 3921 | -3965 | 3315 |
| | MinDE | | | -4911 | | 19 | -3395 | 4765 | -4911 | 6489 | -5280 | 3921 | -3965 | 3326 |
| | MaxDE | | | 6489 | | 20 | -3395 | 4801 | -4911 | 6489 | -5280 | 3422 | -3965 | 3323 |
| | MinFR | | | | -5280 | 21 | -3395 | 4932 | -4911 | 6489 | -5280 | 3422 | -3965 | 3442 |
| | MaxFR | | | | 3445 | 22 | -3395 | 5059 | -4911 | 6489 | -5280 | 3921 | -3965 | 3639 |
| | MinNL | | | | | 23 | -3395 | 5103 | -4911 | 6489 | -5280 | 3900 | -3965 | 3771 |
| | MaxNL | | | | | 24 | -3395 | 5248 | -4911 | 6489 | -5280 | 3697 | -3872 | 4535 |

Figure 10: Screenshot of the "Max net pos" tab

Description:

These tables describe the minimum and maximum CWE net positions in MW of each hub for each hour of the day. These indicators are extracted from the vertices of the final Flow-Based domain given for market coupling. Please note that these min/max net positions depend on the net positions of the other hubs i.e. they are not simultaneously feasible.

Publication time: 10.30 am (D-1)

1.2.6. Max exchanges (Maxbex)

| hour | Max BE=>DE | Max BE=>FR | Max BE=>NL | Max DE=>BE | Max DE=>FR | Max DE=>NL | Max FR=>BE | Max FR=>DE | Max FR=>NL | Max NL=>BE | Max NL=>DE | Max NL=>FR |
|------|------------|------------|------------|------------|------------|------------|------------|------------|------------|------------|------------|------------|
| 1 | 4425 | 3759 | 3368 | 3294 | 5549 | 2992 | 3395 | 3422 | 3422 | 2502 | 3917 | 3290 |
| 2 | 4245 | 3889 | 2983 | 3395 | 5479 | 3066 | 3395 | 3219 | 3291 | 2669 | 4151 | 3507 |
| 3 | 4054 | 4038 | 3617 | 3395 | 5280 | 3417 | 3395 | 3072 | 3445 | 2890 | 4312 | 3867 |
| 4 | 3253 | 4285 | 2670 | 3395 | 5280 | 3156 | 3395 | 2495 | 3012 | 2903 | 4412 | 3825 |
| 5 | 3259 | 4284 | 3060 | 3395 | 5089 | 3493 | 3395 | 2491 | 3156 | 2910 | 4363 | 3834 |
| 6 | 3532 | 4222 | 3576 | 3395 | 5280 | 3415 | 3395 | 2665 | 3374 | 2910 | 3672 | 3814 |
| 7 | 4484 | 3809 | 3880 | 3395 | 5280 | 3439 | 3395 | 3376 | 3965 | 2683 | 3780 | 3478 |
| 8 | 4141 | 3500 | 3788 | 3395 | 5280 | 3645 | 3395 | 2995 | 3525 | 2191 | 3392 | 2993 |
| 9 | 4291 | 3549 | 3846 | 3343 | 5280 | 3620 | 3395 | 3689 | 3965 | 2164 | 2693 | 3034 |
| 10 | 4120 | 3407 | 3965 | 3098 | 5280 | 3493 | 3395 | 4042 | 3965 | 2060 | 2693 | 2871 |
| 11 | 4033 | 3325 | 3965 | 3001 | 5280 | 3376 | 3395 | 4348 | 3965 | 1943 | 2704 | 2691 |
| 12 | 3851 | 3174 | 3965 | 2766 | 5280 | 3088 | 3395 | 3917 | 3917 | 1853 | 2732 | 2601 |
| 13 | 3765 | 3104 | 3965 | 2586 | 5280 | 2807 | 3395 | 3621 | 3621 | 1841 | 3501 | 2585 |
| 14 | 3741 | 3094 | 3965 | 2548 | 5056 | 2701 | 3395 | 3621 | 3621 | 1830 | 3454 | 2596 |
| 15 | 3731 | 3083 | 3965 | 2561 | 5280 | 2863 | 3395 | 3921 | 3921 | 1839 | 3513 | 2587 |
| 16 | 3818 | 3144 | 3965 | 2607 | 5280 | 3045 | 3395 | 3921 | 3921 | 1836 | 2942 | 2587 |
| 17 | 3851 | 3192 | 3965 | 2787 | 5131 | 2809 | 3395 | 3921 | 3921 | 1867 | 2695 | 2591 |
| 18 | 4021 | 3339 | 3965 | 3100 | 5280 | 3326 | 3395 | 3921 | 3921 | 2162 | 2691 | 3011 |
| 19 | 4070 | 3376 | 3937 | 3177 | 5280 | 3351 | 3395 | 3921 | 3921 | 2087 | 2710 | 2897 |
| 20 | 4143 | 3439 | 3894 | 3100 | 5280 | 3237 | 3395 | 3422 | 3422 | 2042 | 2719 | 2824 |
| 21 | 4229 | 3509 | 3965 | 3131 | 5280 | 3008 | 3395 | 3422 | 3422 | 2196 | 2741 | 3035 |
| 22 | 4373 | 3633 | 3965 | 3368 | 5280 | 3074 | 3395 | 3921 | 3921 | 2458 | 2762 | 3398 |
| 23 | 4312 | 3582 | 3965 | 3163 | 5280 | 2722 | 3395 | 3900 | 3648 | 2501 | 2814 | 3415 |
| 24 | 4472 | 3705 | 3872 | 3058 | 5280 | 2757 | 3395 | 3333 | 3697 | 2611 | 3850 | 3583 |

Figure 11: Screenshot of the "Max exchanges (Maxbex)" tab

Description:

Each row represents one market coupling hour (24 rows). After the first column "hour", the next twelve columns gather the maximum bilateral exchanges between two CWE hubs in MW with the assumption that the other net positions are null. These indicators are calculated from the final Flow-Based domain given to the day-ahead market coupling.

For instance: Max BE=> DE is the maximum exchange feasible from BE to DE within the Flow-Based domain given to the power exchanges, with $NP_{FR} = NP_{NL} = 0MW$.

Publication time: 10.30 am (D-1)

1.2.7. Shadow Auction ATC

| Date: | 2015-03-04 | | | | | | | |
|-------|----------------------------|-------|-------|-------|-------|-------|-------|-------|
| Hour | Shadow Auction ATC (in MW) | | | | | | | |
| | BE-NL | NL-BE | DE-NL | NL-DE | BE-FR | FR-BE | FR-DE | DE-FR |
| 1 | 954 | 924 | 2228 | 2604 | 1401 | 1538 | 2878 | 1254 |
| 2 | 1071 | 950 | 2159 | 2698 | 1482 | 1588 | 2784 | 1339 |
| 3 | 1163 | 919 | 2209 | 2703 | 1533 | 1529 | 2779 | 1248 |
| 4 | 1281 | 1066 | 2262 | 2800 | 1635 | 1713 | 2682 | 1692 |
| 5 | 1176 | 1140 | 1694 | 2822 | 1565 | 1791 | 2557 | 1754 |
| 6 | 1081 | 1022 | 2462 | 2724 | 1490 | 1684 | 2758 | 1554 |
| 7 | 958 | 1227 | 2111 | 2470 | 1404 | 1939 | 2574 | 1512 |
| 8 | 926 | 850 | 689 | 2219 | 1414 | 1634 | 2385 | 922 |
| 9 | 1136 | 727 | 952 | 2117 | 1313 | 2285 | 1679 | 715 |
| 10 | 1138 | 727 | 2203 | 2117 | 1316 | 2628 | 1714 | 883 |
| 11 | 1132 | 729 | 1416 | 2118 | 1333 | 2821 | 1692 | 1066 |
| 12 | 1044 | 735 | 614 | 2405 | 1320 | 1987 | 2526 | 675 |
| 13 | 1261 | 737 | 615 | 2526 | 1322 | 1996 | 2518 | 676 |
| 14 | 1225 | 738 | 615 | 2850 | 1323 | 1996 | 2518 | 676 |
| 15 | 1173 | 735 | 614 | 2870 | 1318 | 1996 | 2518 | 675 |
| 16 | 1077 | 853 | 681 | 2781 | 1427 | 2013 | 2500 | 709 |
| 17 | 1019 | 957 | 1642 | 2548 | 1450 | 1823 | 2690 | 1052 |
| 18 | 887 | 983 | 1498 | 2367 | 1351 | 2014 | 2499 | 942 |
| 19 | 840 | 1064 | 867 | 2165 | 1316 | 2103 | 2410 | 756 |
| 20 | 876 | 936 | 1799 | 2322 | 1343 | 1916 | 2597 | 982 |
| 21 | 907 | 898 | 832 | 2434 | 1366 | 1802 | 2711 | 778 |
| 22 | 918 | 1010 | 928 | 2501 | 1375 | 1996 | 2518 | 826 |
| 23 | 853 | 949 | 831 | 2228 | 1326 | 1996 | 2518 | 768 |
| 24 | 866 | 1129 | 1924 | 2276 | 1336 | 1996 | 2518 | 949 |

Figure 12: Screenshot of the "Shadow Auction ATC" tab

Description:

Each row represents one market coupling hour (24 rows overall). The eight next columns represent the ATC for Shadow Auctions in MW per border in the two directions. These ATCs are calculated from the Final Flow-Based domain and may be used as fallback in case of a market decoupling situation.

Publication time: 10.30 am (D-1)

2 Post-coupling operational data (D-1)

2.1. Net Position

| Date: 2014-10-12 Data publication in this section will begin only after CWE FB MC go-live. | | | | | |
|---|-----------------------------------|--------|--------|-------|--|
| Hour | Internal CWE Net Position (in MW) | | | | |
| | BE | DE | FR | NL | |
| 1 | 7040 | -24468 | 10265 | 7163 | |
| 2 | 6513 | 27859 | -40841 | 6469 | |
| 3 | 10672 | 23302 | -40004 | 6030 | |
| 4 | -5889 | -23167 | 35050 | -5994 | |
| 5 | -5812 | 35202 | -35299 | 5909 | |
| 6 | -5747 | -22429 | 34017 | -5841 | |
| 7 | 6929 | 22714 | -35575 | 5932 | |
| 8 | -5864 | -25435 | 37663 | -6364 | |
| 9 | -6243 | 37232 | -37982 | 6993 | |
| 10 | -6665 | -27460 | 41665 | -7540 | |
| 11 | 6971 | 26976 | -42063 | 8116 | |
| 12 | -6132 | -28632 | 43195 | -8431 | |
| 13 | 7229 | 46146 | -44788 | -8587 | |
| 14 | -7065 | -27125 | 28417 | 5773 | |
| 15 | -6937 | 39689 | -41278 | 8526 | |
| 16 | -6916 | -26891 | 42237 | -8430 | |
| 17 | 7069 | 23838 | -39748 | 8841 | |
| 18 | -7816 | -30975 | 29482 | 9309 | |
| 19 | 7971 | -31704 | 33095 | -9362 | |
| 20 | -7890 | -30992 | 48082 | -9200 | |
| 21 | 6929 | 22714 | -35575 | 5932 | |
| 22 | -5864 | -25435 | 37663 | -6364 | |
| 23 | -6243 | 37232 | -37982 | 6993 | |
| 24 | -6665 | -27460 | 41665 | -7540 | |

Figure 13: Screenshot of the "Net Position" tab

Description:

Each row represents one market coupling hour. After the first column "hour", the next four columns indicate the CWE net positions in MW which were computed by the market coupling algorithm. In other words: the CWE net positions respecting the FB domain.

Publication time: 1.00 pm (D-1)

2.2. Allocated Capacities

| Date: 2016-03-30 | | | | | | | | | | | | | | | | | | |
|-------------------------|-----------------------------|-------|--------|--------|-------|-------|-------|-------|-------|-------|-------|-------|-------|-------|-------|-------|------|-------|
| Hour | Bilateral Exchanges (in MW) | | | | | | | | | | | | | | | | | |
| | FR-ES | ES-FR | DK1-DE | DE-DK1 | BE-NL | NL-BE | DE-NL | NL-DE | BE-FR | FR-BE | FR-DE | DE-FR | FR-IT | IT-FR | AT-IT | IT-AT | SHT | IT-SI |
| 1 | 0 | 24468 | 43606 | 0 | 1234 | 0 | 4321 | 0 | 1234 | 0 | 4321 | 0 | 1234 | 0 | 4321 | 0 | 1234 | 0 |
| 2 | 0 | 23632 | 40841 | 0 | 1234 | 0 | 4321 | 0 | 1234 | 0 | 4321 | 0 | 1234 | 0 | 4321 | 0 | 1234 | 0 |
| 3 | 0 | 23302 | 40004 | 0 | 1234 | 0 | 4321 | 0 | 1234 | 0 | 4321 | 0 | 1234 | 0 | 4321 | 0 | 1234 | 0 |
| 4 | 0 | 23167 | 36809 | 0 | 1234 | 0 | 4321 | 0 | 1234 | 0 | 4321 | 0 | 1234 | 0 | 4321 | 0 | 1234 | 0 |
| 5 | 0 | 23041 | 35299 | 0 | 1234 | 0 | 4321 | 0 | 1234 | 0 | 4321 | 0 | 1234 | 0 | 4321 | 0 | 1234 | 0 |
| 6 | 0 | 22429 | 34982 | 0 | 1234 | 0 | 4321 | 0 | 1234 | 0 | 4321 | 0 | 1234 | 0 | 4321 | 0 | 1234 | 0 |
| 7 | 0 | 22714 | 35575 | 0 | 1234 | 0 | 4321 | 0 | 1234 | 0 | 4321 | 0 | 1234 | 0 | 4321 | 0 | 1234 | 0 |
| 8 | 0 | 25435 | 36131 | 0 | 1234 | 0 | 4321 | 0 | 1234 | 0 | 4321 | 0 | 1234 | 0 | 4321 | 0 | 1234 | 0 |
| 9 | 0 | 26670 | 37982 | 0 | 1234 | 0 | 4321 | 0 | 1234 | 0 | 4321 | 0 | 1234 | 0 | 4321 | 0 | 1234 | 0 |
| 10 | 0 | 27460 | 39642 | 0 | 1234 | 0 | 4321 | 0 | 1234 | 0 | 4321 | 0 | 1234 | 0 | 4321 | 0 | 1234 | 0 |
| 11 | 0 | 27793 | 42063 | 0 | 1234 | 0 | 4321 | 0 | 1234 | 0 | 4321 | 0 | 1234 | 0 | 4321 | 0 | 1234 | 0 |
| 12 | 0 | 28632 | 43195 | 0 | 1234 | 0 | 4321 | 0 | 1234 | 0 | 4321 | 0 | 1234 | 0 | 4321 | 0 | 1234 | 0 |
| 13 | 0 | 28369 | 44788 | 0 | 1234 | 0 | 4321 | 0 | 1234 | 0 | 4321 | 0 | 1234 | 0 | 4321 | 0 | 1234 | 0 |
| 14 | 0 | 27125 | 43417 | 0 | 1234 | 0 | 4321 | 0 | 1234 | 0 | 4321 | 0 | 1234 | 0 | 4321 | 0 | 1234 | 0 |
| 15 | 0 | 27365 | 41278 | 0 | 1234 | 0 | 4321 | 0 | 1234 | 0 | 4321 | 0 | 1234 | 0 | 4321 | 0 | 1234 | 0 |
| 16 | 0 | 26891 | 39632 | 0 | 1234 | 0 | 4321 | 0 | 1234 | 0 | 4321 | 0 | 1234 | 0 | 4321 | 0 | 1234 | 0 |
| 17 | 0 | 26999 | 39748 | 0 | 1234 | 0 | 4321 | 0 | 1234 | 0 | 4321 | 0 | 1234 | 0 | 4321 | 0 | 1234 | 0 |
| 18 | 0 | 30975 | 43254 | 0 | 1234 | 0 | 4321 | 0 | 1234 | 0 | 4321 | 0 | 1234 | 0 | 4321 | 0 | 1234 | 0 |
| 19 | 0 | 31704 | 47895 | 0 | 1234 | 0 | 4321 | 0 | 1234 | 0 | 4321 | 0 | 1234 | 0 | 4321 | 0 | 1234 | 0 |
| 20 | 0 | 30992 | 49485 | 0 | 1234 | 0 | 4321 | 0 | 1234 | 0 | 4321 | 0 | 1234 | 0 | 4321 | 0 | 1234 | 0 |
| 21 | 0 | 29816 | 48078 | 0 | 1234 | 0 | 4321 | 0 | 1234 | 0 | 4321 | 0 | 1234 | 0 | 4321 | 0 | 1234 | 0 |
| 22 | 0 | 28062 | 45541 | 0 | 1234 | 0 | 4321 | 0 | 1234 | 0 | 4321 | 0 | 1234 | 0 | 4321 | 0 | 1234 | 0 |
| 23 | 0 | 28150 | 45130 | 0 | 1234 | 0 | 4321 | 0 | 1234 | 0 | 4321 | 0 | 1234 | 0 | 4321 | 0 | 1234 | 0 |
| 24 | 0 | 25870 | 47515 | 0 | 1234 | 0 | 4321 | 0 | 1234 | 0 | 4321 | 0 | 1234 | 0 | 4321 | 0 | 1234 | 0 |

Figure 14: Screenshot of the "Allocated Capacities" tab

Description:

Each row represents one market coupling hour. After the first column “hour”, the next eighteen columns indicate the capacity allocated by the market coupling algorithm in MW in the two directions for the following borders:

- FR-ES
- DK1-DE
- BE-NL
- DE-NL
- BE-FR
- FR-DE
- FR-IT
- AT-IT
- SI-IT

For the exchanges in the CWE region, those allocated capacities are computed from the CWE net positions with the so-called ‘bilateral exchange computation’(BEC) under the constraint of remaining intuitive. For the other borders, they come from the post-processing of the Euphemia algorithm (flow calculation).

Publication time: 1.00 pm (D-1)

2.3. Price Spread

| Date: 2015-03-26 Data publication in this section will begin only after CWE FB MC go-live. | | | | | | | | | | | | | | | | | | |
|--|-------------------------|-------|--------|--------|-------|-------|-------|-------|-------|-------|-------|-------|-------|-------|-------|-------|-------|-------|
| Hour | Price Spread (in €/MWh) | | | | | | | | | | | | | | | | | |
| | FR-ES | ES-FR | DK1-DE | DE-DK1 | BE-NL | NL-BE | DE-NL | NL-DE | BE-FR | FR-BE | FR-DE | DE-FR | FR-IT | IT-FR | AT-IT | IT-AT | SI-IT | IT-SI |
| 1 | 10 | -10 | 5 | -5 | 0 | 0 | 12 | -12 | 4 | -4 | 6 | -6 | 12 | -12 | 4 | -4 | 6 | -6 |
| 2 | 10 | -10 | 5 | -5 | 0 | 0 | 12 | -12 | 4 | -4 | 6 | -6 | 12 | -12 | 4 | -4 | 6 | -6 |
| 3 | 10 | -10 | 5 | -5 | 0 | 0 | 12 | -12 | 4 | -4 | 6 | -6 | 12 | -12 | 4 | -4 | 6 | -6 |
| 4 | 10 | -10 | 5 | -5 | 0 | 0 | 12 | -12 | 4 | -4 | 6 | -6 | 12 | -12 | 4 | -4 | 6 | -6 |
| 5 | 10 | -10 | 5 | -5 | 0 | 0 | 12 | -12 | 4 | -4 | 6 | -6 | 12 | -12 | 4 | -4 | 6 | -6 |
| 6 | 10 | -10 | 5 | -5 | 0 | 0 | 12 | -12 | 4 | -4 | 6 | -6 | 12 | -12 | 4 | -4 | 6 | -6 |
| 7 | 10 | -10 | 5 | -5 | 0 | 0 | 12 | -12 | 4 | -4 | 6 | -6 | 12 | -12 | 4 | -4 | 6 | -6 |
| 8 | 10 | -10 | 5 | -5 | 0 | 0 | 12 | -12 | 4 | -4 | 6 | -6 | 12 | -12 | 4 | -4 | 6 | -6 |
| 9 | 10 | -10 | 5 | -5 | 0 | 0 | 12 | -12 | 4 | -4 | 6 | -6 | 12 | -12 | 4 | -4 | 6 | -6 |
| 10 | 10 | -10 | 5 | -5 | 0 | 0 | 12 | -12 | 4 | -4 | 6 | -6 | 12 | -12 | 4 | -4 | 6 | -6 |
| 11 | 10 | -10 | 5 | -5 | 0 | 0 | 12 | -12 | 4 | -4 | 6 | -6 | 12 | -12 | 4 | -4 | 6 | -6 |
| 12 | 10 | -10 | 5 | -5 | 0 | 0 | 12 | -12 | 4 | -4 | 6 | -6 | 12 | -12 | 4 | -4 | 6 | -6 |
| 13 | 10 | -10 | 5 | -5 | 0 | 0 | 12 | -12 | 4 | -4 | 6 | -6 | 12 | -12 | 4 | -4 | 6 | -6 |
| 14 | 10 | -10 | 5 | -5 | 0 | 0 | 12 | -12 | 4 | -4 | 6 | -6 | 12 | -12 | 4 | -4 | 6 | -6 |
| 15 | 10 | -10 | 5 | -5 | 0 | 0 | 12 | -12 | 4 | -4 | 6 | -6 | 12 | -12 | 4 | -4 | 6 | -6 |
| 16 | 10 | -10 | 5 | -5 | 0 | 0 | 12 | -12 | 4 | -4 | 6 | -6 | 12 | -12 | 4 | -4 | 6 | -6 |
| 17 | 10 | -10 | 5 | -5 | 0 | 0 | 12 | -12 | 4 | -4 | 6 | -6 | 12 | -12 | 4 | -4 | 6 | -6 |
| 18 | 10 | -10 | 5 | -5 | 0 | 0 | 12 | -12 | 4 | -4 | 6 | -6 | 12 | -12 | 4 | -4 | 6 | -6 |
| 19 | 10 | -10 | 5 | -5 | 0 | 0 | 12 | -12 | 4 | -4 | 6 | -6 | 12 | -12 | 4 | -4 | 6 | -6 |
| 20 | 10 | -10 | 5 | -5 | 0 | 0 | 12 | -12 | 4 | -4 | 6 | -6 | 12 | -12 | 4 | -4 | 6 | -6 |
| 21 | 10 | -10 | 5 | -5 | 0 | 0 | 12 | -12 | 4 | -4 | 6 | -6 | 12 | -12 | 4 | -4 | 6 | -6 |
| 22 | 10 | -10 | 5 | -5 | 0 | 0 | 12 | -12 | 4 | -4 | 6 | -6 | 12 | -12 | 4 | -4 | 6 | -6 |
| 23 | 10 | -10 | 5 | -5 | 0 | 0 | 12 | -12 | 4 | -4 | 6 | -6 | 12 | -12 | 4 | -4 | 6 | -6 |
| 24 | 10 | -10 | 5 | -5 | 0 | 0 | 12 | -12 | 4 | -4 | 6 | -6 | 12 | -12 | 4 | -4 | 6 | -6 |

Figure 15: Screenshot of the “Price Spread” tab

Description:

Each row represents one market coupling hour. After the first column “hour”, the next eighteen columns indicate the market price spread in €/MWh for the two directions of the following borders:

- FR-ES
- DK1-DE
- BE-NL
- DE-NL
- BE-FR
- FR-DE
- FR-IT
- AT-IT
- SI-IT

Publication time: 1.00 pm (D-1)

2.4. Intraday ATC

| Date: 2015-03-04 | | | | | | | | | |
|------------------|----------------------|-------|-------|-------|-------|-------|-------|-------|--|
| Hour | Intraday ATC (in MW) | | | | | | | | |
| | BE-NL | NL-BE | DE-NL | NL-DE | BE-FR | FR-BE | FR-DE | DE-FR | |
| 1 | 931 | 850 | 1903 | 1956 | 657 | 1650 | 4693 | 968 | |
| 2 | 998 | 818 | 2084 | 1910 | 657 | 1575 | 4935 | 1280 | |
| 3 | 1058 | 775 | 2306 | 1903 | 650 | 1521 | 4894 | 1270 | |
| 4 | 1191 | 934 | 3112 | 1843 | 800 | 1709 | 4535 | 1341 | |
| 5 | 1062 | 996 | 2760 | 1621 | 719 | 1797 | 4293 | 1321 | |
| 6 | 919 | 833 | 3505 | 1528 | 593 | 1627 | 4534 | 1196 | |
| 7 | 854 | 880 | 1827 | 1348 | 605 | 1960 | 5096 | 848 | |
| 8 | 648 | 761 | 341 | 1533 | 1042 | 1588 | 5602 | 373 | |
| 9 | 1538 | 418 | 247 | 2238 | 542 | 2879 | 4027 | 122 | |
| 10 | 1513 | 591 | 400 | 1959 | 626 | 2728 | 3945 | 197 | |
| 11 | 1700 | 309 | 190 | 2354 | 436 | 2854 | 3853 | 92 | |
| 12 | 2089 | 0 | 0 | 3081 | 0 | 2817 | 3479 | 0 | |
| 13 | 2299 | 0 | 0 | 3249 | 0 | 2818 | 3480 | 0 | |
| 14 | 2310 | 0 | 0 | 3373 | 0 | 2823 | 3475 | 0 | |
| 15 | 2262 | 0 | 0 | 3423 | 0 | 2826 | 3419 | 0 | |
| 16 | 2138 | 0 | 0 | 3389 | 0 | 2932 | 3418 | 0 | |
| 17 | 1581 | 599 | 350 | 2520 | 613 | 2831 | 3769 | 174 | |
| 18 | 2344 | 0 | 0 | 3696 | 0 | 2567 | 3535 | 0 | |
| 19 | 1704 | 0 | 0 | 3426 | 0 | 3137 | 3401 | 0 | |
| 20 | 1540 | 275 | 160 | 2424 | 375 | 3064 | 3974 | 79 | |
| 21 | 1962 | 0 | 0 | 3322 | 0 | 2915 | 3627 | 0 | |
| 22 | 1954 | 0 | 0 | 3484 | 0 | 2923 | 3750 | 0 | |
| 23 | 1829 | 0 | 0 | 3225 | 0 | 2885 | 3654 | 0 | |
| 24 | 915 | 748 | 560 | 2080 | 554 | 2616 | 4164 | 252 | |

Figure 16: Screenshot of the "Intraday ATC" tab

Description:

Each row represents one market coupling hour. After the first column "hour", the next eight columns indicate the remaining capacity left after the day-ahead capacity allocation, expressed as **initial** ID ATCs in MW for the two directions of the CWE borders. Please note that these values are not the final values for the intraday market and therefore will not be updated throughout the day.

Publication time: 1.00 pm (D-1)

2.5. Congestion Income

| Date: 2015-03-04 | | | | | | | | | | | | | | | | | | | | |
|------------------|-------------------------------|----|----|----|-------------------------------|-----|-----|-----------|-------------|------------------------------|--------|--------|----------|-------|-------|----------|-------|----------|-------|-------|
| Hour | Net Congestion Income Per Hub | | | | Net Congestion Income per TSO | | | | | Congestion Income per Border | | | | | | | | | | |
| | BE | DE | FR | NL | Amprion | Ela | RTE | Tennet BV | TenneT GmbH | Transnet | DE-DK1 | DK1-DE | FR-ES | ES-FR | FR-IT | IT-FR | AT-IT | IT-AT | SI-IT | IT-SI |
| 1 | | | | | | | | | | | 0 | 0 | 15596.01 | 0 | 0 | 54162.06 | 0 | 9793.14 | | |
| 2 | | | | | | | | | | | 0 | 0 | 13476.06 | 0 | 0 | 52617.35 | 0 | 9513.84 | | |
| 3 | | | | | | | | | | | 0 | 0 | 7442.4 | 0 | 0 | 52113.3 | 0 | 9422.7 | | |
| 4 | | | | | | | | | | | 0 | 0 | 2206.14 | 0 | 0 | 55511.64 | 0 | 10037.16 | | |
| 5 | | | | | | | | | | | 0 | 0 | 0 | 0 | 0 | 57963.16 | 0 | 10484.04 | | |
| 6 | | | | | | | | | | | 0 | 0 | 0 | 0 | 0 | 61788 | 0 | 11172 | | |
| 7 | | | | | | | | | | | 0 | 0 | 2006.79 | 0 | 0 | 64828.62 | 0 | 11721.78 | | |
| 8 | | | | | | | | | | | 0 | 0 | 9082.31 | 0 | 0 | 62443.14 | 0 | 10642.26 | | |
| 9 | | | | | | | | | | | 0 | 0 | 20253.32 | 0 | 0 | 65768.04 | 0 | 10766.76 | | |
| 10 | | | | | | | | | | | 0 | 0 | 20364.53 | 0 | 0 | 66968.79 | 0 | 10953.51 | | |
| 11 | | | | | | | | | | | 0 | 0 | 19418.2 | 0 | 0 | 67365.09 | 0 | 11028.21 | | |
| 12 | | | | | | | | | | | 0 | 0 | 18262.94 | 0 | 0 | 68733.99 | 0 | 10831.5 | | |
| 13 | | | | | | | | | | | 0 | 0 | 22163.45 | 0 | 0 | 68977.35 | 0 | 10814.07 | | |
| 14 | | | | | | | | | | | 0 | 0 | 21642.69 | 0 | 0 | 67304.25 | 0 | 10500.33 | | |
| 15 | | | | | | | | | | | 0 | 0 | 22859.4 | 0 | 0 | 66924 | 0 | 10443.06 | | |
| 16 | | | | | | | | | | | 0 | 0 | 23105.2 | 0 | 0 | 65707.2 | 0 | 10445.55 | | |
| 17 | | | | | | | | | | | 0 | 0 | 20338.95 | 0 | 0 | 64566.46 | 0 | 10570.05 | | |
| 18 | | | | | | | | | | | 0 | 0 | 20991.32 | 0 | 0 | 65585.52 | 0 | 10632.3 | | |
| 19 | | | | | | | | | | | 0 | 0 | 26976.55 | 0 | 0 | 63212.76 | 0 | 9795.66 | | |
| 20 | | | | | | | | | | | 0 | 0 | 36857.71 | 0 | 0 | 55485.94 | 0 | 9247.86 | | |
| 21 | | | | | | | | | | | 0 | 0 | 32507.05 | 0 | 0 | 57022.83 | 0 | 8495.88 | | |
| 22 | | | | | | | | | | | 0 | 0 | 37472.21 | 0 | 0 | 49717.83 | 0 | 7855.95 | | |
| 23 | | | | | | | | | | | 0 | 0 | 36353.82 | 0 | 0 | 48826.62 | 0 | 7726.47 | | |
| 24 | | | | | | | | | | | 0 | 0 | 38697.94 | 0 | 0 | 49649.92 | 0 | 8796.48 | | |

Description:

This tab gathers the net congestion income per hub and per TSO for the CWE region, and the gross congestion income (without UIOSI taken into account) for the non-CWE borders.

Publication time: 7.00 pm (D-1)

3 Additional data publication (D+2)

3.1. Aggregated D2CF data

| Date: | 2015-03-03 The data for 2015-03-03 has been retrieved successfully. | | | | | | | | | | | | |
|-------------|--|-------|-------|-------|--------------|-------|-------|-------|-----------------------------|-------|------|-------|--|
| TimeStamps | Vertical load | | | | D2CF (in MW) | | | | Best Forecast Net Positions | | | | |
| | BE | DE | FR | NL | BE | DE | FR | NL | BE | DE | FR | NL | |
| 20150303_0 | 7034 | 21574 | 45295 | 7027 | 5657 | 35852 | 51453 | 6025 | -1599 | 12337 | 5256 | -1137 | |
| 20150303_1 | 6687 | 21094 | 42338 | 6689 | 5102 | 34853 | 48570 | 5465 | -1800 | 11987 | 5345 | -1342 | |
| 20150303_2 | 6494 | 19970 | 41678 | 6638 | 4852 | 32143 | 47867 | 5454 | -1851 | 10612 | 5304 | -1290 | |
| 20150303_3 | 7074 | 21102 | 38247 | 6711 | 5262 | 30974 | 46829 | 5654 | -2018 | 8395 | 7609 | -1157 | |
| 20150303_4 | 6735 | 23315 | 38237 | 6967 | 5351 | 32144 | 47646 | 5964 | -1585 | 7449 | 8436 | -1090 | |
| 20150303_5 | 7383 | 26243 | 40595 | 7606 | 5900 | 37317 | 48238 | 6682 | -1692 | 9489 | 6684 | -1028 | |
| 20150303_6 | 8573 | 33467 | 46244 | 8809 | 6375 | 43962 | 55443 | 7980 | -2423 | 8793 | 8192 | -956 | |
| 20150303_7 | 9211 | 36998 | 52343 | 10012 | 7131 | 47403 | 61243 | 9042 | -2317 | 8571 | 7938 | -1101 | |
| 20150303_8 | 9206 | 35481 | 54657 | 11101 | 7730 | 46539 | 63006 | 9701 | -1712 | 9203 | 7392 | -1554 | |
| 20150303_9 | 9176 | 33530 | 55717 | 11437 | 7968 | 46160 | 64074 | 9980 | -1444 | 10719 | 7374 | -1625 | |
| 20150303_10 | 8984 | 31717 | 55600 | 11290 | 7681 | 45062 | 63787 | 9987 | -1535 | 11367 | 7225 | -1469 | |
| 20150303_11 | 8951 | 30820 | 55209 | 10973 | 7743 | 43793 | 63582 | 10032 | -1439 | 10878 | 7403 | -1106 | |
| 20150303_12 | 8595 | 29675 | 54566 | 10629 | 7360 | 42309 | 62923 | 9902 | -1460 | 10691 | 7395 | -878 | |
| 20150303_13 | 8623 | 31131 | 53447 | 10590 | 7019 | 42940 | 62312 | 9993 | -1829 | 9997 | 7900 | -747 | |
| 20150303_14 | 8585 | 32559 | 52259 | 10447 | 7027 | 43282 | 61187 | 10015 | -1783 | 8979 | 7960 | -575 | |
| 20150303_15 | 8653 | 34353 | 50617 | 10467 | 7008 | 44773 | 60635 | 10027 | -1869 | 8719 | 9097 | -585 | |
| 20150303_16 | 8754 | 36025 | 49934 | 10597 | 6977 | 45419 | 60228 | 9939 | -2003 | 7847 | 9374 | -801 | |
| 20150303_17 | 9146 | 39526 | 50806 | 10493 | 7023 | 48061 | 60780 | 10026 | -2357 | 7161 | 9049 | -603 | |
| 20150303_18 | 9756 | 42746 | 54522 | 10476 | 7710 | 50692 | 62046 | 10047 | -2297 | 6679 | 6578 | -561 | |
| 20150303_19 | 9751 | 42782 | 59016 | 10529 | 7976 | 50271 | 66070 | 10170 | -2036 | 6205 | 6038 | -498 | |
| 20150303_20 | 9251 | 38532 | 56685 | 10024 | 7567 | 49332 | 64558 | 9856 | -1941 | 9130 | 6902 | -307 | |
| 20150303_21 | 8764 | 38800 | 53116 | 9301 | 7031 | 47360 | 62125 | 10120 | -1971 | 7127 | 8099 | 695 | |
| 20150303_22 | 8924 | 36065 | 52734 | 8580 | 7070 | 44029 | 61687 | 9497 | -2092 | 6641 | 8054 | 803 | |
| 20150303_23 | 8686 | 31957 | 55116 | 7930 | 6741 | 38375 | 61984 | 8506 | -2178 | 5234 | 5972 | 468 | |

Figure 17: Screenshot of the "D2CF" tab

Description:

For capacity calculation purposes, each CWE TSO generates one individual grid model per hour. This tab publishes the aggregated assumptions that are taken in the common and individual grid models for each market coupling hour:

- "Vertical load" is the load as seen from the transmission grid in MW in the Common Grid Model;
- "Generation" is the generation in MW in the Common Grid Model;
- "Best forecast net position" is the forecast of the overall balance of the countries in MW in the Individual Grid Models (please note that DE contains also the information of Denmark West (DK1) before merging into the Common Grid Model.

Publication time: D+2 (ex-post)

3.2. Refprog

| Date: | 2015-02-20 The data for 2015-02-20 has been retrieved successfully. | | | | | | | | | | | | | |
|-------|--|-------|-------|-------|-------|-------|-------|-------|-------|-------|-------|--------|--|--------------------------|
| Hour | Refprog Bilateral Exchanges (in MW) | | | | | | | | | | | | IT-APG | Notes for extra borders: |
| | BE-NL | DE-NL | FR-BE | FR-DE | FR-ES | FR-IT | CH-DE | DE-AT | CH-FR | DE-CZ | DE-PL | IT-APG | | |
| 1 | -1401 | 2288 | 641 | -2500 | 1168 | 2769 | -1421 | 5513 | -1568 | -1156 | -175 | IT-SHB | | |
| 2 | -1401 | 2288 | 689 | -2500 | -297 | 2261 | -1455 | 5229 | -2137 | -1188 | -175 | PL-CZ | | |
| 3 | -1401 | 2288 | 379 | -2500 | -1100 | 1952 | -1451 | 4908 | -2141 | -1361 | -166 | PL-SK | W/PS: part of Ukraine | |
| 4 | -1401 | 2188 | 972 | -2500 | -1100 | 2548 | -1524 | 4571 | -2143 | -1345 | -175 | RO-BG | Zone ES+ includes ES and MA | |
| 5 | -1401 | 2188 | 1148 | -2500 | -911 | 2671 | -1524 | 4863 | -2101 | -1217 | -175 | RO-HU | Zone DE+ includes DE, DKw, parts of Austria and Luxembourg | |
| 6 | -1401 | 2188 | 1003 | -2500 | -867 | 2684 | -1524 | 5766 | -2210 | -1030 | -60 | SHB-HU | Zone SHB includes SI, HR and BA | |
| 7 | -1401 | 2288 | 40 | -2500 | -1100 | 2944 | -1489 | 5551 | -1666 | -1010 | -220 | SK-HU | Zone SMM includes ME, RS and MK | |
| 8 | -1401 | 2174 | 340 | -2500 | -40 | 3080 | -1387 | 5039 | -697 | -1496 | -230 | | | |
| 9 | -1401 | 2295 | 433 | -2500 | -636 | 3100 | -1387 | 5194 | -947 | -1578 | -230 | | | |
| 10 | -1401 | 2388 | 205 | -2500 | 117 | 3129 | -1387 | 5510 | -789 | -1464 | -205 | | | |
| 11 | -1401 | 2388 | 180 | -2500 | 1114 | 2820 | -1387 | 5952 | -695 | -1231 | 0 | | | |
| 12 | -1401 | 2395 | -16 | -2500 | 1200 | 2977 | -1421 | 6074 | -945 | -1143 | 10 | | | |
| 13 | -1401 | 2438 | -206 | -2500 | 1200 | 1934 | -1421 | 6395 | -1340 | -1002 | 15 | | | |
| 14 | -1401 | 2438 | 28 | -2500 | 1200 | 2278 | -1421 | 6497 | -1845 | -1012 | 15 | | | |
| 15 | -1397 | 2438 | 185 | -2500 | 1200 | 3100 | -1558 | 6329 | -1916 | -941 | 10 | | | |
| 16 | -1323 | 2438 | 473 | -2500 | 1200 | 3150 | -1558 | 5955 | -2627 | -910 | 9 | | | |
| 17 | -1290 | 2438 | 613 | -2500 | 1200 | 3150 | -1558 | 5373 | -2486 | -1238 | -275 | | | |
| 18 | -1170 | 2076 | 968 | -2429 | 1200 | 3150 | -1455 | 5227 | -2386 | -1317 | -235 | | | |
| 19 | -1401 | 2195 | 398 | -2500 | 874 | 3150 | -1353 | 4954 | -806 | -1338 | -203 | | | |
| 20 | -1401 | 2195 | -326 | -1800 | 1169 | 3060 | -1352 | 5516 | -744 | -1356 | -71 | | | |
| 21 | -1401 | 2188 | -13 | -1800 | 1200 | 3125 | -1387 | 5586 | -1702 | -975 | 15 | | | |
| 22 | -1401 | 2188 | -22 | -1800 | 1200 | 3150 | -1387 | 6286 | -2081 | -1221 | 0 | | | |
| 23 | -1401 | 2188 | 205 | -1800 | 1200 | 3125 | -1387 | 6507 | -2104 | -1426 | 3 | | | |
| 24 | -1401 | 2188 | 194 | -1800 | 1200 | 2995 | -1387 | 6525 | -2239 | -1312 | 3 | | | |

Figure 18: Screenshot of the "Refprog" tab

Description:

The "Refprog" are the reference bilateral exchanges used during the merging process of the Common Grid Model. They do not strictly correspond to the best forecast of the net positions.

Publication time: D+2 (ex-post)

3.3. All CBCO Fixed Label

| FileId | DeliveryDate | Period | Row | Presolved | RemainingAvailableMargin | BiddingArea_Shortname | Factor | BiddingArea_Shortname | Factor | BiddingArea_Shortname | Factor | BiddingArea_Shortname | Factor |
|--------|--------------|--------|-------------|-----------|--------------------------|-----------------------|-------------|-----------------------|-------------|-----------------------|-------------|-----------------------|----------|
| 321 | 20141117 | 1 | 17794022000 | FAUX | | 1738 BE | -0.01041 DE | | -0.06876 FR | | -0.15327 NL | | -0.0375 |
| 321 | 20141117 | 1 | 17794021000 | FAUX | | 1738 BE | -0.01041 DE | | -0.06876 FR | | -0.15327 NL | | -0.0375 |
| 321 | 20141117 | 1 | 17794020000 | FAUX | | 1449 BE | -0.01041 DE | | -0.06876 FR | | -0.15327 NL | | -0.0375 |
| 321 | 20141117 | 1 | 18325472000 | FAUX | | 1520 BE | 0.04673 DE | | 0.11003 FR | | 0.16262 NL | | 0.06688 |
| 321 | 20141117 | 1 | 18325471000 | FAUX | | 1520 BE | 0.04673 DE | | 0.11003 FR | | 0.16262 NL | | 0.06688 |
| 321 | 20141117 | 1 | 18325470000 | FAUX | | 1210 BE | 0.04673 DE | | 0.11003 FR | | 0.16262 NL | | 0.06688 |
| 321 | 20141117 | 1 | 18447132000 | FAUX | | 1743 BE | 0.04186 DE | | 0.18253 FR | | 0.30936 NL | | 0.10473 |
| 321 | 20141117 | 1 | 18447131000 | FAUX | | 1718 BE | 0.02231 DE | | 0.10374 FR | | 0.19414 NL | | 0.05904 |
| 321 | 20141117 | 1 | 18447130000 | FAUX | | 1358 BE | 0.02231 DE | | 0.10374 FR | | 0.19414 NL | | 0.05904 |
| 321 | 20141117 | 1 | 17112902000 | FAUX | | 1443 BE | 0.01222 DE | | -0.0381 FR | | -0.08932 NL | | -0.01709 |
| 321 | 20141117 | 1 | 17112901000 | FAUX | | 1244 BE | 0.01151 DE | | -0.03387 FR | | -0.0853 NL | | -0.01491 |
| 321 | 20141117 | 1 | 17112900000 | FAUX | | 969 BE | 0.01151 DE | | -0.03387 FR | | -0.0853 NL | | -0.01491 |
| 321 | 20141117 | 1 | 18913952000 | FAUX | | 1785 BE | 0.05952 DE | | 0.16255 FR | | 0.27154 NL | | 0.09673 |
| 321 | 20141117 | 1 | 18913951000 | FAUX | | 1785 BE | 0.05952 DE | | 0.16255 FR | | 0.27154 NL | | 0.09673 |
| 321 | 20141117 | 1 | 18913950000 | FAUX | | 1423 BE | 0.05952 DE | | 0.16255 FR | | 0.27154 NL | | 0.09673 |
| 321 | 20141117 | 1 | 16979072000 | FAUX | | 1004 BE | 0.0358 DE | | -0.15187 FR | | 0.08622 NL | | -0.10107 |
| 321 | 20141117 | 1 | 16979071000 | FAUX | | 1004 BE | 0.0358 DE | | -0.15187 FR | | 0.08622 NL | | -0.10107 |
| 321 | 20141117 | 1 | 16979070000 | FAUX | | 822 BE | 0.02059 DE | | -0.09211 FR | | 0.0734 NL | | -0.06399 |
| 321 | 20141117 | 1 | 17870832000 | FAUX | | 1770 BE | -0.01072 DE | | -0.06961 FR | | -0.15054 NL | | -0.03823 |
| 321 | 20141117 | 1 | 17870831000 | FAUX | | 1770 BE | -0.01072 DE | | -0.06961 FR | | -0.15054 NL | | -0.03823 |
| 321 | 20141117 | 1 | 17870830000 | FAUX | | 1481 BE | -0.01072 DE | | -0.06961 FR | | -0.15054 NL | | -0.03823 |
| 321 | 20141117 | 1 | 18461522000 | FAUX | | 1483 BE | 0.03147 DE | | 0.12729 FR | | 0.19529 NL | | 0.07378 |
| 321 | 20141117 | 1 | 18461521000 | FAUX | | 1483 BE | 0.03147 DE | | 0.12729 FR | | 0.19529 NL | | 0.07378 |
| 321 | 20141117 | 1 | 18461520000 | FAUX | | 1173 BE | 0.03147 DE | | 0.12729 FR | | 0.19529 NL | | 0.07378 |
| 321 | 20141117 | 1 | 17616972000 | FAUX | | 1650 BE | 0.00584 DE | | 0.00778 FR | | -0.0488 NL | | 0.00833 |
| 321 | 20141117 | 1 | 17616971000 | FAUX | | 1364 BE | 0.00584 DE | | 0.00778 FR | | -0.0488 NL | | 0.00833 |
| 321 | 20141117 | 1 | 17616970000 | FAUX | | 1089 BE | 0.00584 DE | | 0.00778 FR | | -0.0488 NL | | 0.00833 |
| 321 | 20141117 | 1 | 17589442000 | FAUX | | 1504 BE | 0.01158 DE | | -0.0398 FR | | -0.08391 NL | | -0.01853 |
| 321 | 20141117 | 1 | 17589441000 | FAUX | | 1218 BE | 0.01158 DE | | -0.0398 FR | | -0.08391 NL | | -0.01853 |
| 321 | 20141117 | 1 | 17589440000 | FAUX | | 943 BE | 0.01158 DE | | -0.0398 FR | | -0.08391 NL | | -0.01853 |
| 321 | 20141117 | 1 | 17727032000 | FAUX | | 1655 BE | -0.00862 DE | | -0.07683 FR | | -0.16576 NL | | -0.04159 |
| 321 | 20141117 | 1 | 17727031000 | FAUX | | 1655 BE | -0.00862 DE | | -0.07683 FR | | -0.16576 NL | | -0.04159 |
| 321 | 20141117 | 1 | 17727030000 | FAUX | | 1366 BE | -0.00862 DE | | -0.07683 FR | | -0.16576 NL | | -0.04159 |
| 321 | 20141117 | 1 | 16809682000 | FAUX | | 1516 BE | 0.02142 DE | | -0.09027 FR | | 0.05144 NL | | -0.06047 |

Figure 19: Screenshot of the "All CBCO Fixed Label" tab

Description:

This tab shows all the information about the CBCOs used for a particular date ("DeliveryDate") with a fixed label ("Row"). Each row gathers the features of one CBCO per hour:

- FileId: the identity number of the file;
- DeliveryDate: the corresponding Business Day;
- Period: the corresponding hour;
- Row: the fixed label of the CBCO;
- Presolved: if the value is TRUE then the corresponding CBCO constrains the FB domain (see PTDFs tab);
- RemainingAvailableMargin: the remaining available margin of the corresponding CBCO in MW;
- BiddingArea_Shortname: the bidding area of the following ptdf (Factor);
- Factor: the ptdf of the previous hub (BiddingArea_Shortname).

Explanation regarding labeling of fixed presolved anonymized CBCOs:

| FileId,DeliveryDate,Period,Row,RemainingAvailableMargin,BiddingArea_Shortname,Factor |
|--|
| 255,20140912,1,18612210000,394.0,BE,-0.05748 |
| 255,20140912,1,18612210000,394.0,DE,-0.05132 |
| 255,20140912,1,18612210000,394.0,FR,-0.05882 |
| 255,20140912,1,18612210000,394.0,NL,-0.03241 |

HUB Translation

- 11 = BE;
- 12 = BE-NL
- 13 = NL;
- 14 = NL-DE
- 15 = DE;
- 16 = DE-FR
- 17 = FR;
- 18 = FR-BE

Explanation regarding labeling of fixed all anonymized CBCOs:

| FileId,DeliveryDate,Period,Row,Presolved,RemainingAvailableMargin,BiddingArea_Shortname,Factor,BiddingArea_Shortname,Factor,BiddingArea_Shortname,Factor |
|--|
| 255,20140912,1,16471842000,false,1479.0,BE,0.05088,DE,-0.15591,FR,0.07400,NL,-0.12173 |
| 255,20140912,1,18612210000,true,394.0,BE,0.05748,DE,-0.05132,FR,-0.05882,NL,-0.03241 |

- ▶ Fixed ID for CBCO can be found as the element 'Row' in the csv. (i.e. Row = Fixed Anonymous ID for CBCO)
- ▶ Presolved tag can be found as the element "Presolved" in the csv (False = not presolved / True = presolved). Presolved CBCOs are published in both files.
- ▶ Elements ID explained:
 - XX - XXXX - X - XXX (Hub - CBCO - Fmax/Spanning / Fallback - Enlarged and Virtual CBs)
 - 1443966000 (14 = Hub, 43966 = CBCO, 0 = Fmax / Spanning / Fallback & 000 = Virtual CBs)

Publication time: D+2 (ex-post)

4 CASC Utility Tool Web Service

The web service can be accessed by 2 different URLs, each one with a different technology. The same methods with the same results can be called on each URL. The next section will explain each URL further.

4.1. ASMX Service

URL: <http://utilitytool.casc.eu/CascUtilityWebService.asmx>

WSDL: <http://utilitytool.casc.eu/CascUtilityWebService.asmx?WSDL>

This web service can be accessed by the following protocols: SOAP 1.1, SOAP 1.2, HTTP GET and HTTP POST.

For more information on using the ASMX, please visit the URL. This URL can also be used to query the data with a web browser for testing purposes.

4.2. SVC Service

URL: <http://utilitytool.casc.eu/CascUtilityWCF.svc>

WSDL: <http://utilitytool.casc.eu/CascUtilityWCF.svc?singlewsdl>

This web service can be accessed by the following protocols: SOAP 1.1 and SOAP 1.2.