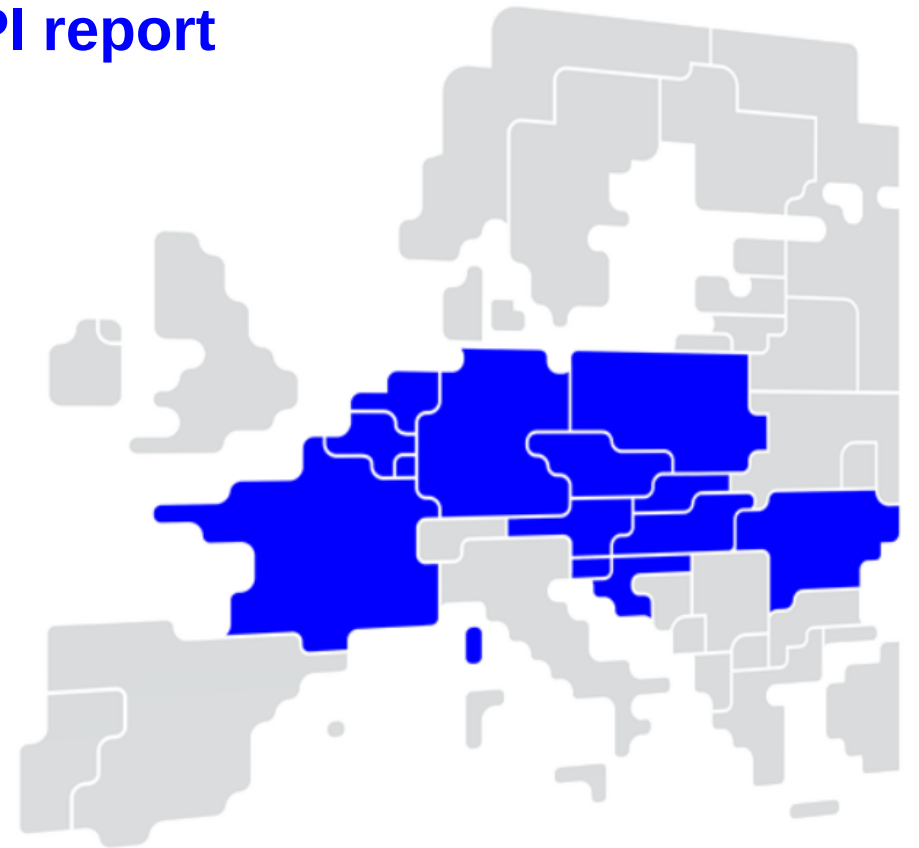


Core FB MC Operational KPI report

January 2024



Overview of Operational KPIs



Adjustment for minimum RAM Inclusion

- KPI 1: Average maximum AMR per CNE
- KPI 2: Average maximum AMR per TSO

TSOs' adjustment after validation

- KPI 3: Share of MTUs with intervention per TSO
- KPI 4: Average IVA applied for each CNE affected by TSO intervention

Power System Impact Analysis

- KPI 5: Min & max net positions per BZ hub
- KPI 6: Virtual margins at market balance for CORE TSOs
- KPI 7: Non-Core exchanges delta flow

Non-costly Remedial Action Optimization Analysis

- KPI 8: Relative Time Share of Applied RAs, by TSO, Type and Mode
- KPI 9: Most limiting CNEC per TSO (NRAO)
- KPI 10: Average variation of relative RAM before and after NRAO

Market Impact Assessment

- KPI 11: Most often presolved CNEs (top 20)
- KPI 12: Most limiting CNEs (top 20)
- KPI 13: Allocation Constraints

KPI 1: Average maximum AMR per CNE (Top 10)

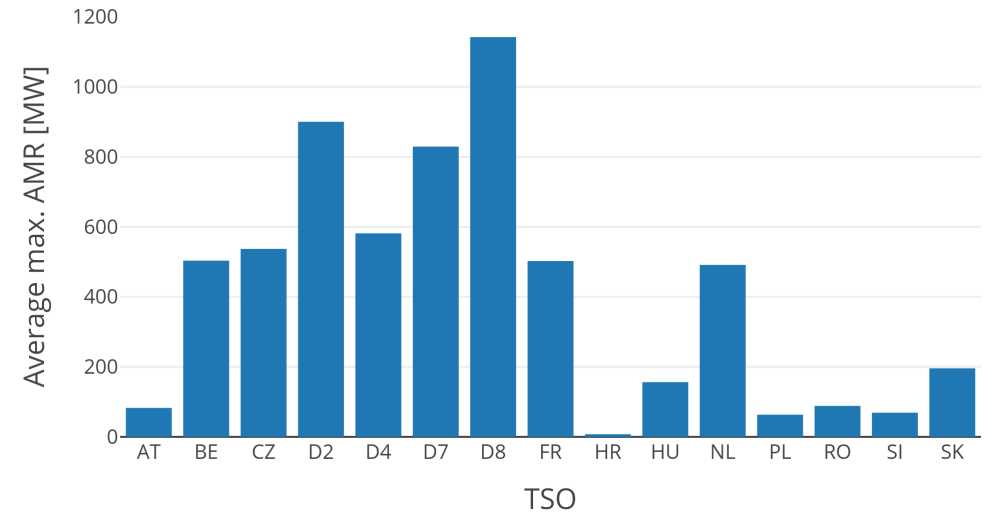
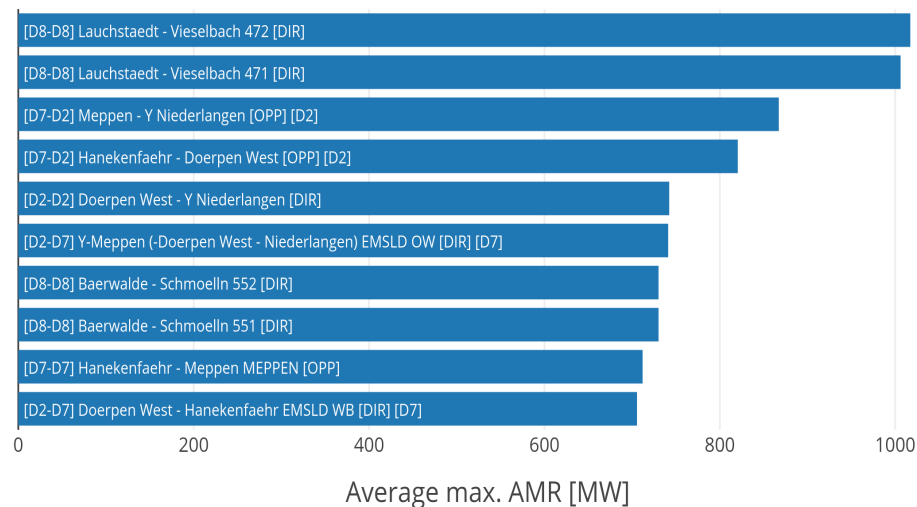
KPI 2: Average maximum AMR per TSO



CNE	Average Maximum AMR (MW)	AMR as % of Fmax
[D8-D8] Lauchstaedt - Vieselbach 472 [DIR]	1017.24	40.79%
[D8-D8] Lauchstaedt - Vieselbach 471 [DIR]	1006.11	39.15%
[D7-D2] Meppen - Y Niederlangen [OPP] [D2]	867.22	42.47%
[D7-D2] Hanekenfaehr - Doerpen West [OPP] [D2]	820.48	40.19%
[D2-D2] Doerpen West - Y Niederlangen [DIR]	742.29	36.34%
[D2-D7] Y-Meppen (-Doerpen West - Niederlangen) EMSLD OW [DIR] [D7]	741.08	31.45%
[D8-D8] Baerwalde - Schmoelln 551 [DIR]	730.11	29.27%
[D8-D8] Baerwalde - Schmoelln 552 [DIR]	730.11	29.27%
[D7-D7] Hanekenfaehr - Meppen MEPPEN [OPP]	711.95	30.55%
[D2-D7] Doerpen West - Hanekenfaehr EMSLD WB [DIR] [D7]	705.55	30.32%

TSO	Average maximum AMR per TSO
AT	82.58
BE	503.18
CZ	536.96
D2	900.06
D4	581.42
D7	829.14
D8	1141.95
FR	502.29
HR	7.61
HU	156.38

TSO	Average maximum AMR per TSO
NL	491.23
PL	63.32
RO	88.20
SI	68.98
SK	195.56



KPI 3: Share of MTUs with intervention per TSO



Total BDs

31

Total MTUs

744

MTUs without IVA

246

Share of distinct MTUs without IVA

33.06%

MTUs with IVA

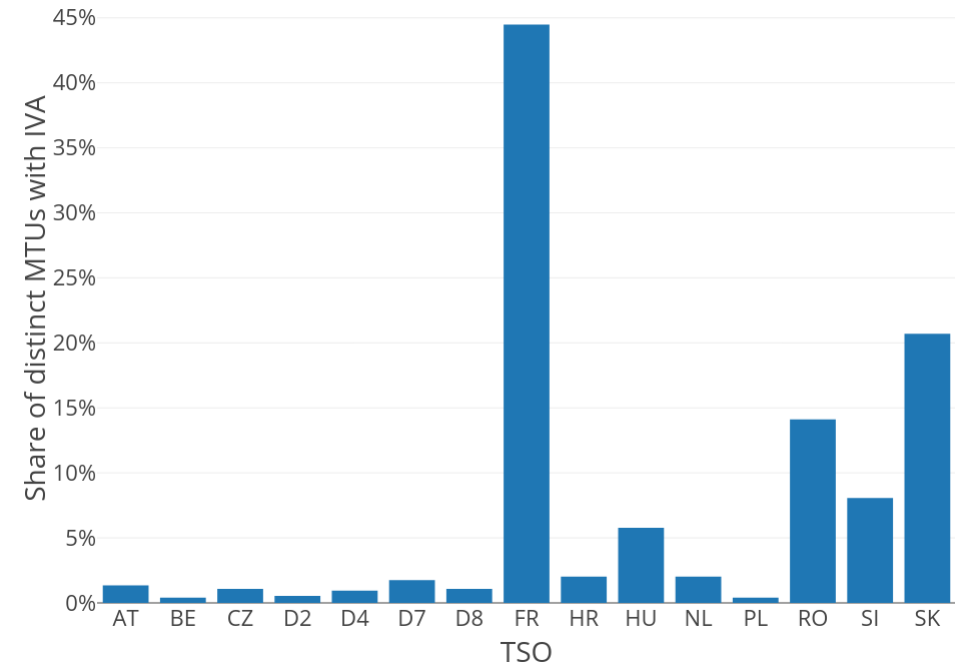
498

Share of distinct MTUs with IVA

66.9%

TSO	Share of distinct MTUs with IVA	Distinct MTUs with IVA
AT	1.34%	10
BE	0.40%	3
CZ	1.08%	8
D2	0.54%	4
D4	0.94%	7
D7	1.75%	13
D8	1.08%	8
FR	44.49%	331
HR	2.02%	15
HU	5.78%	43

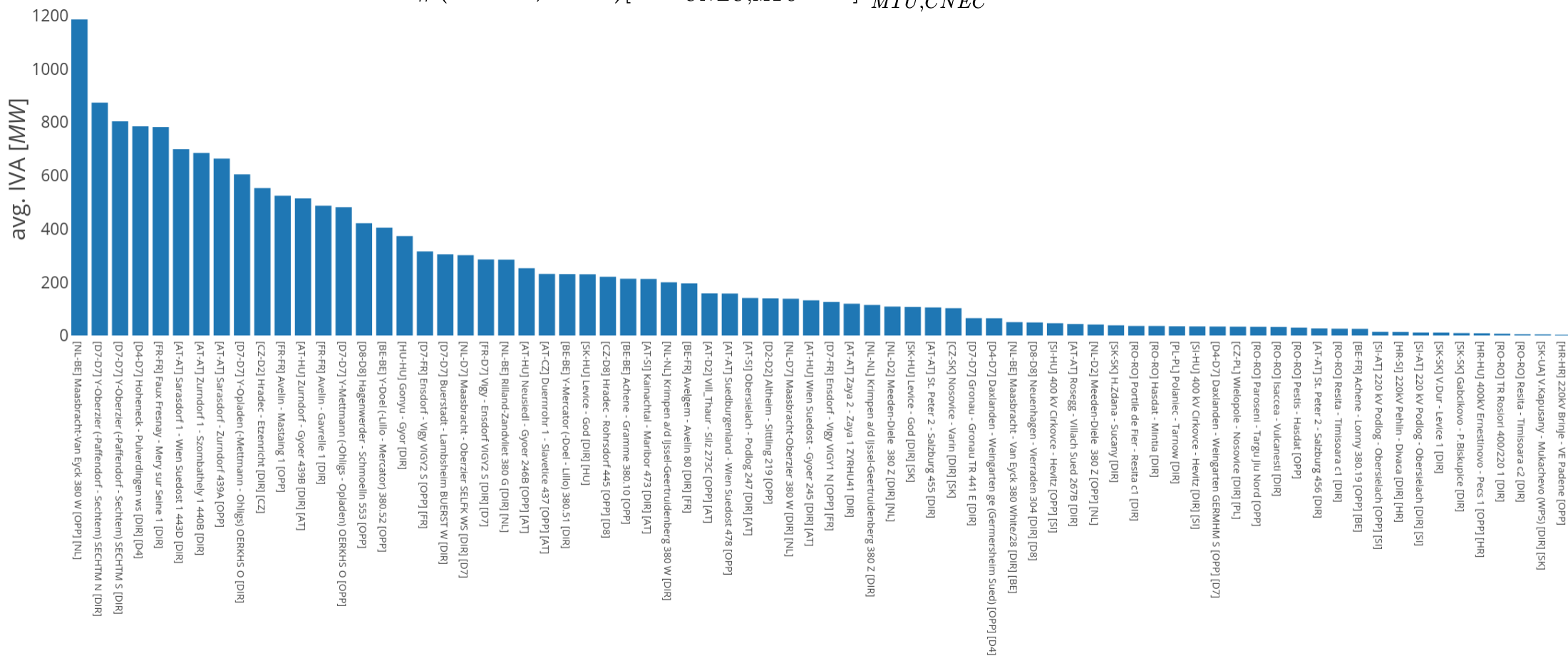
TSO	Share of distinct MTUs with IVA	Distinct MTUs with IVA
NL	2.02%	15
PL	0.40%	3
RO	14.11%	105
SI	8.06%	60
SK	20.70%	154



KPI 4a: Average IVA applied for each CNE affected by TSO intervention



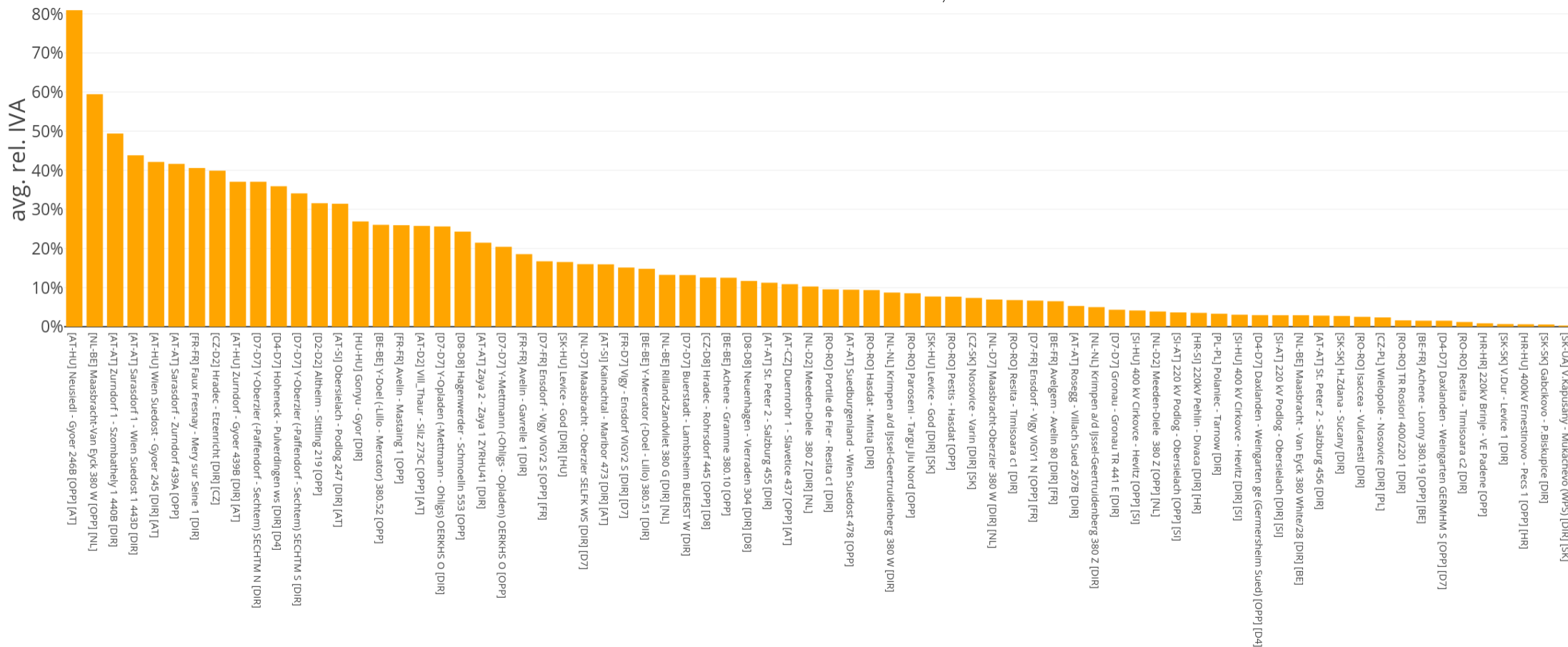
$$\text{avg. IVA}_{CNE} = \frac{1}{\#(CNEC, MTU)[IVA_{CNEC, MTU} > 0]} \sum_{MTU, CNEC} IVA_{CNEC, MTU} [IVA_{CNEC, MTU} > 0]$$



KPI 4b: Average relative IVA applied for each CNE affected by TSO intervention



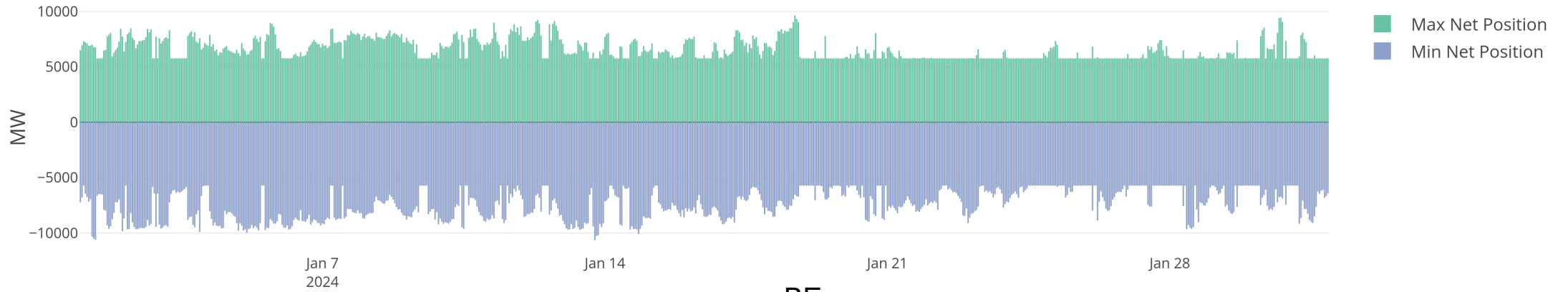
$$\text{avg. rel. IVA}_{CNE} = \frac{1}{\#(CNEC, MTU)[IVA_{CNEC, MTU} > 0]} \sum_{MTU, CNEC} \frac{IVA_{CNEC, MTU}[IVA_{CNEC, MTU} > 0]}{F_{max CNEC, MTU}[IVA_{CNEC, MTU} > 0]}$$



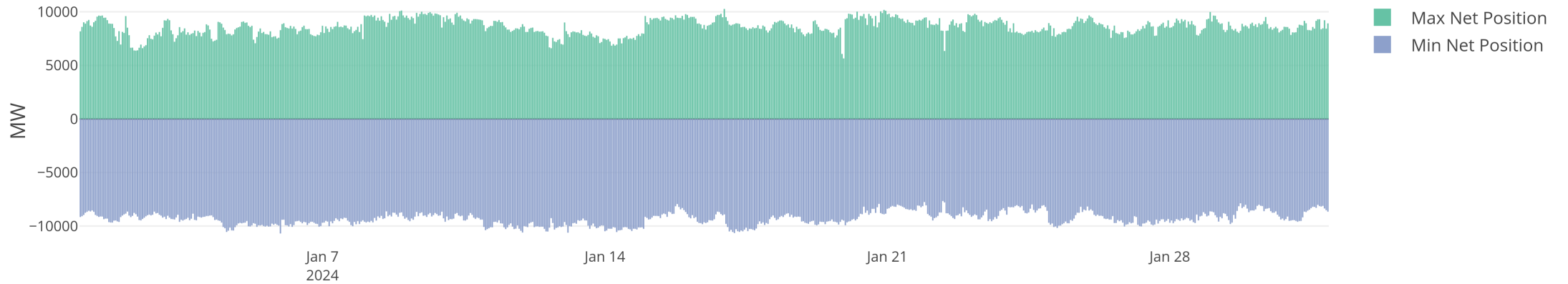
KPI 5: Min & max net positions per BZ hub



AT



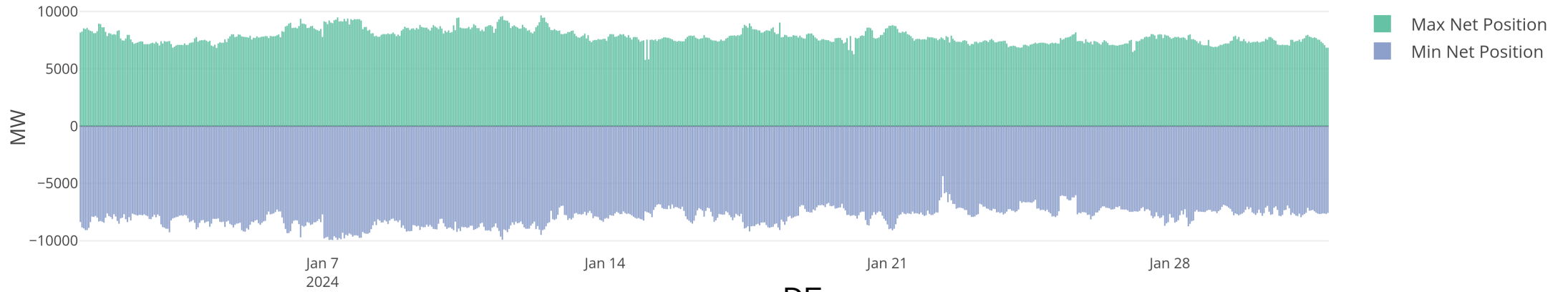
BE



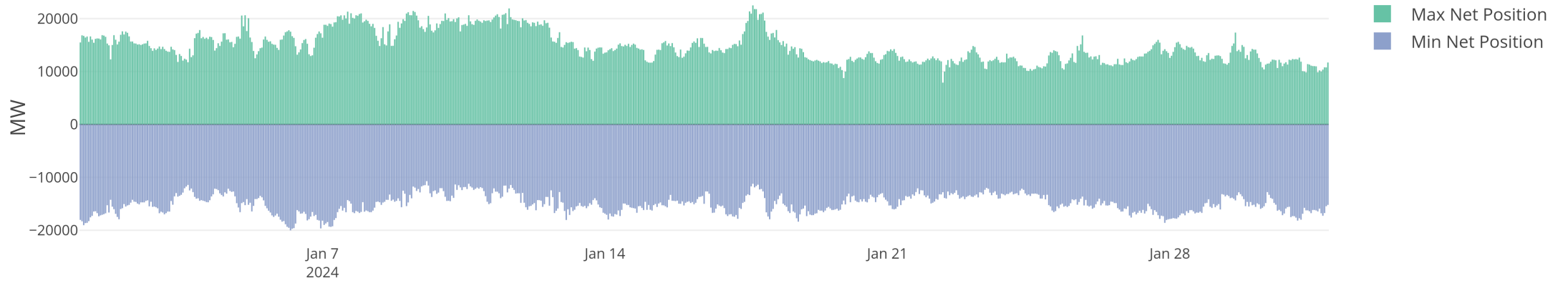
KPI 5: Min & max net positions per BZ hub



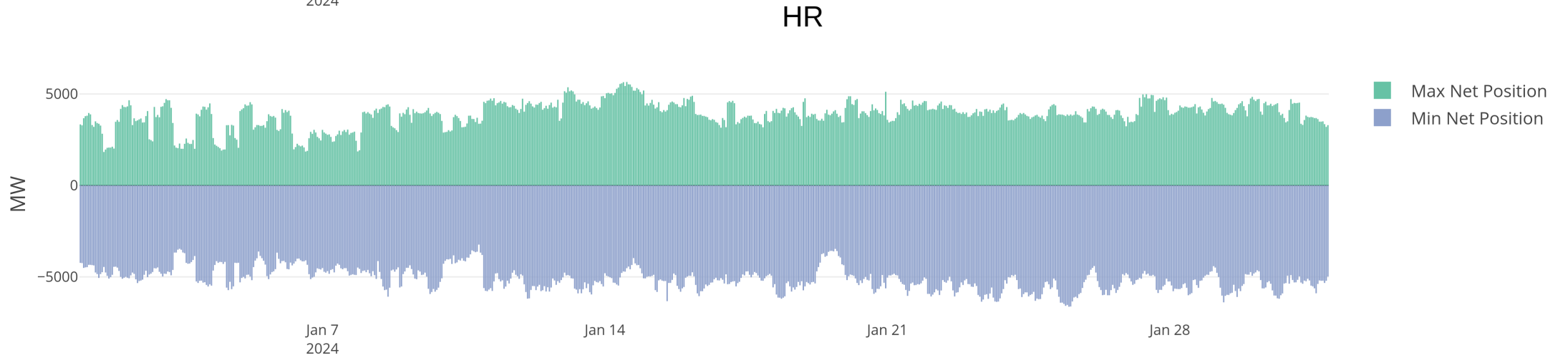
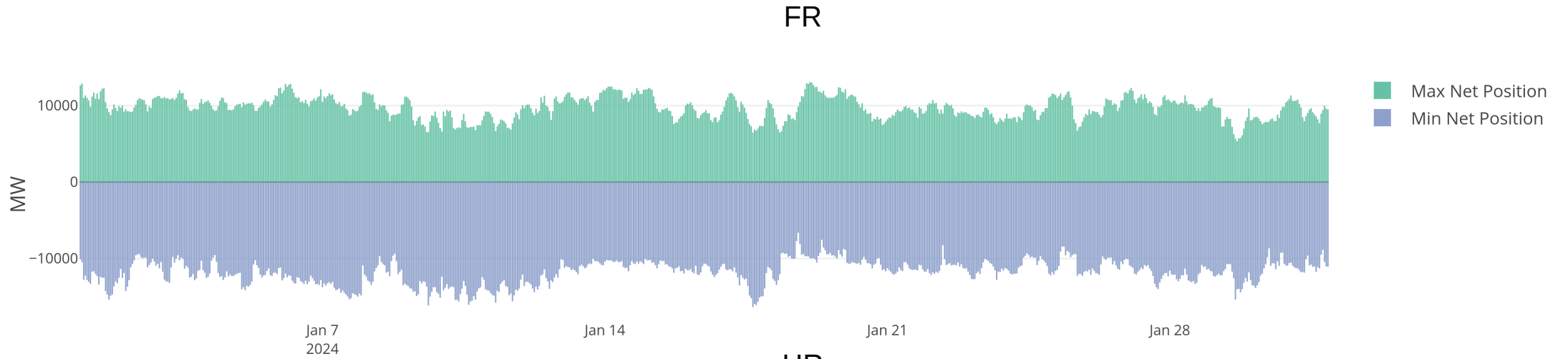
CZ



DE



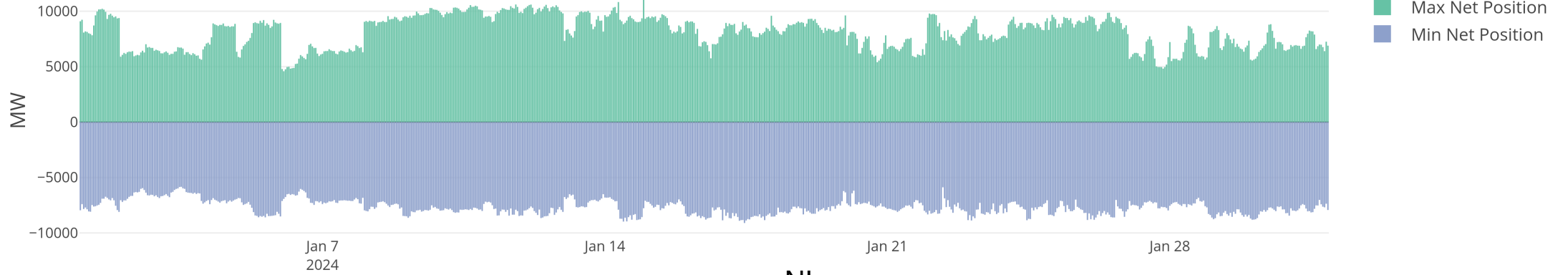
KPI 5: Min & max net positions per BZ hub



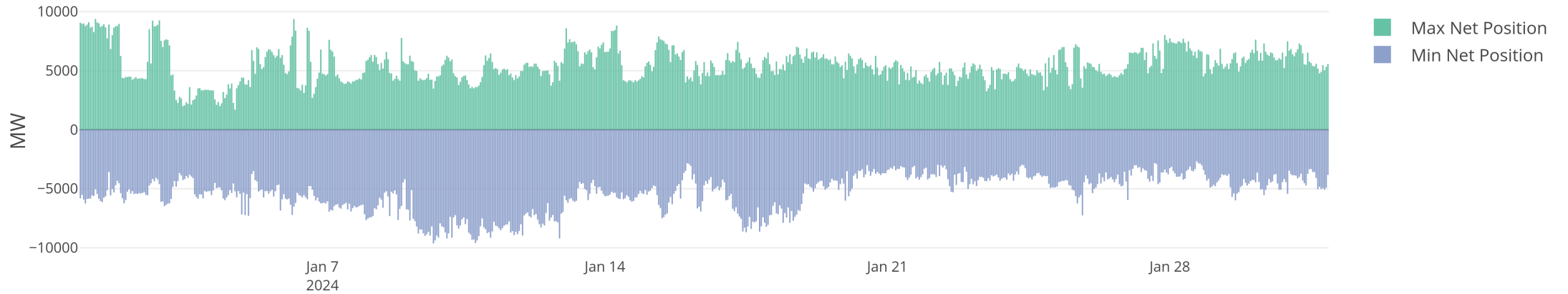
KPI 5: Min & max net positions per BZ hub



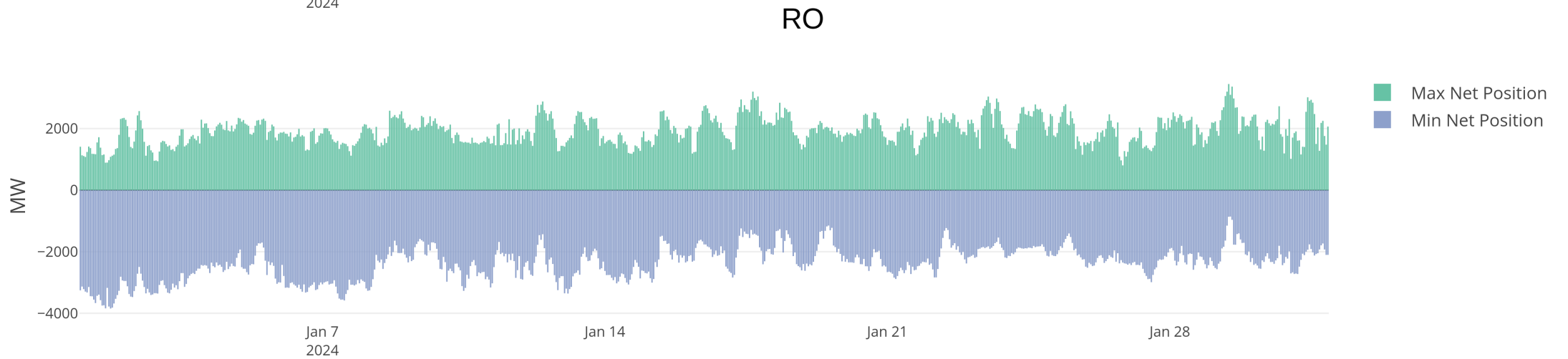
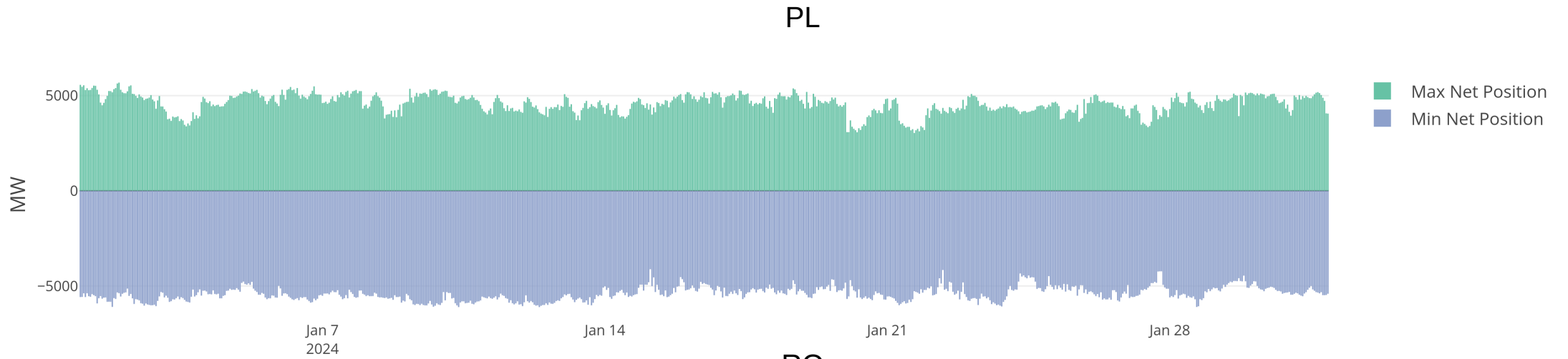
HU



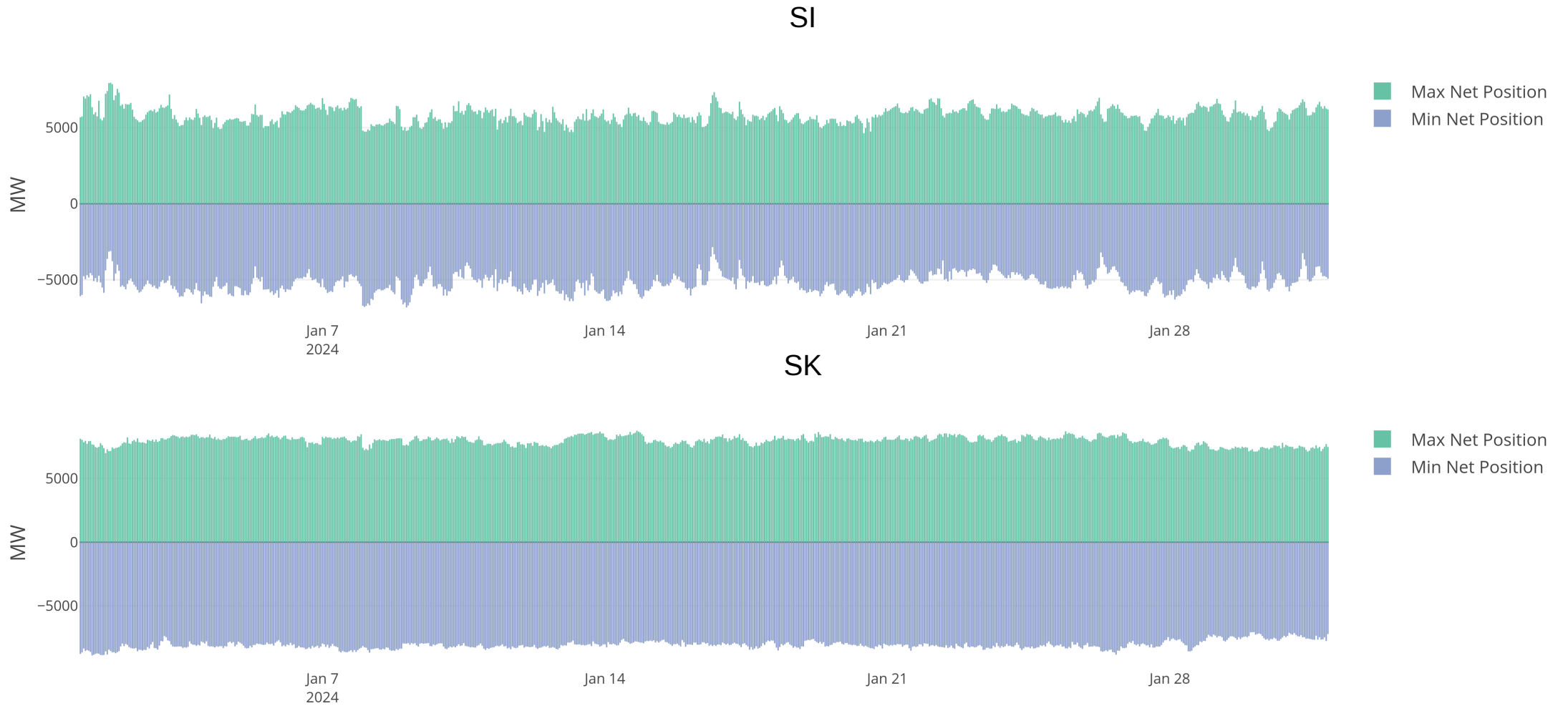
NL



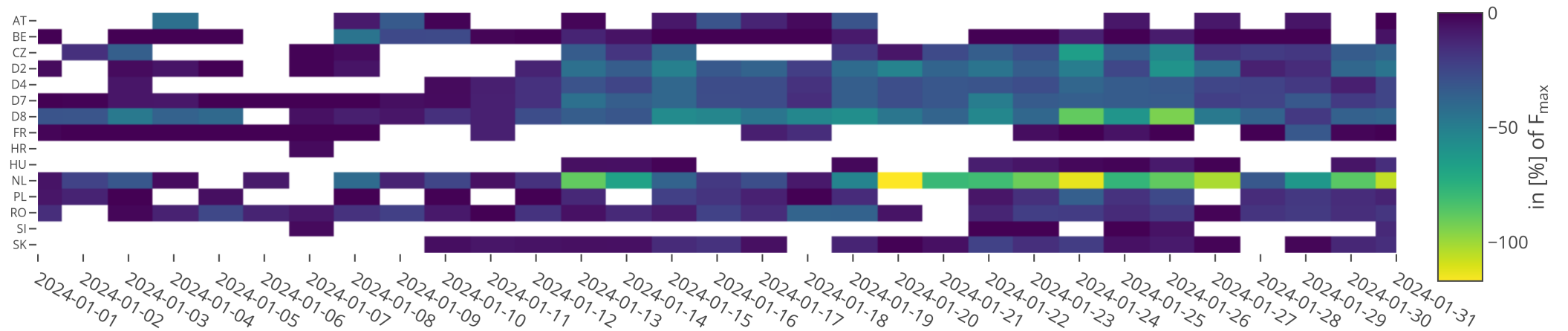
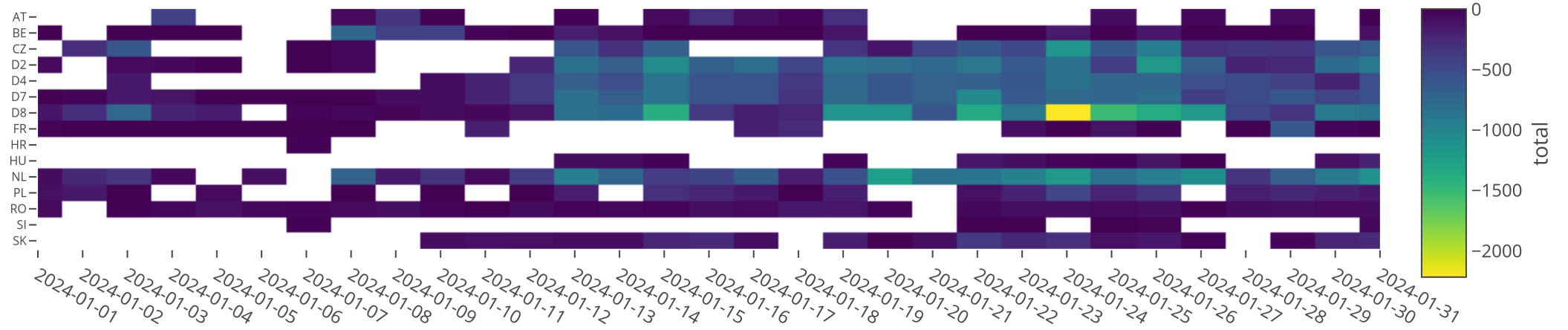
KPI 5: Min & max net positions per BZ hub



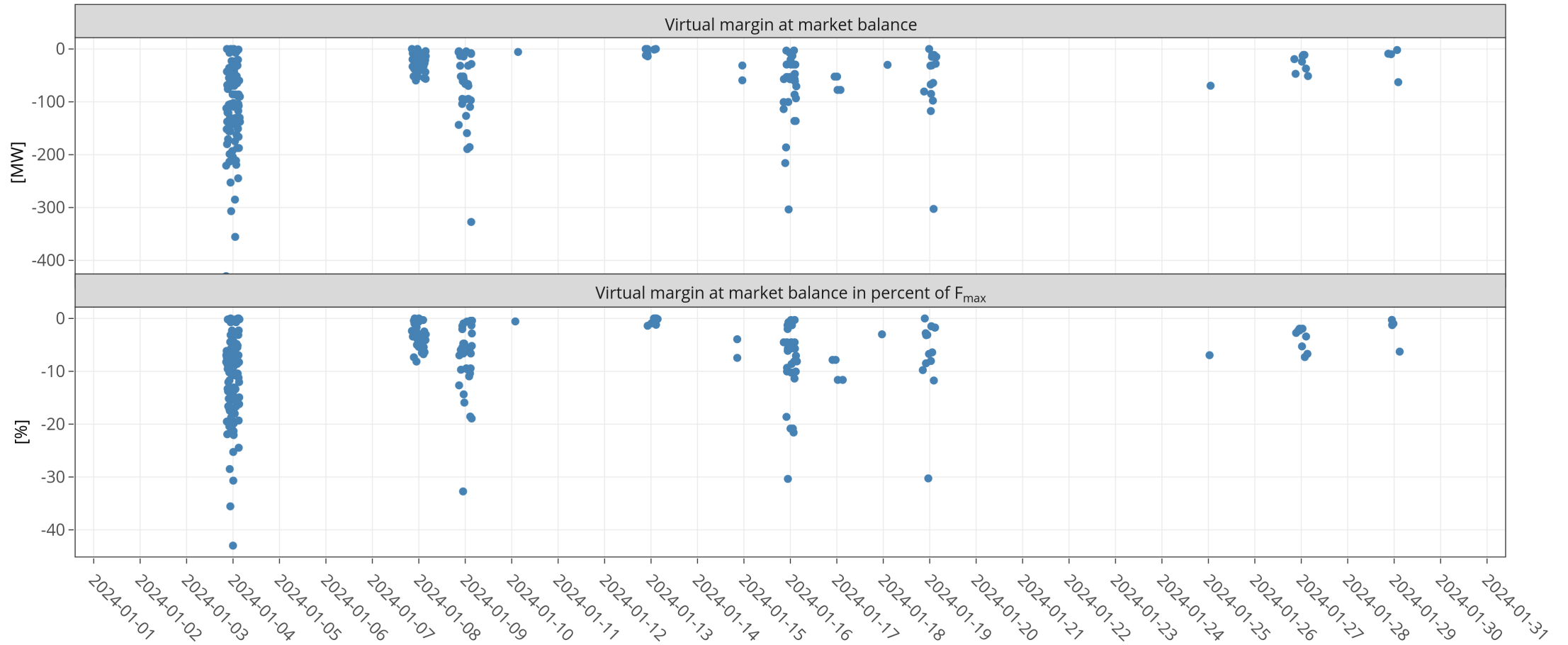
KPI 5: Min & max net positions per BZ hub



KPI 6a: Highest virtual margins at market balance for CORE TSOs



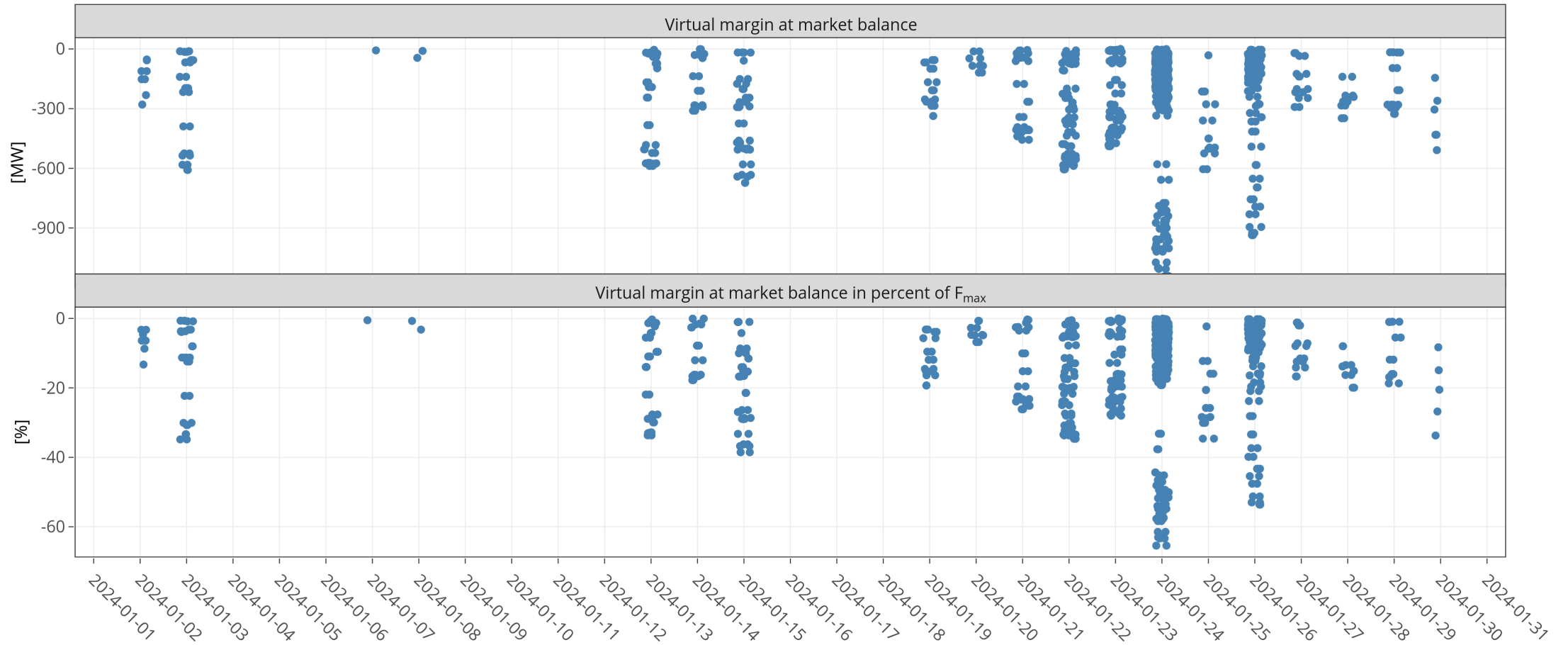
KPI 6b: Virtual margins at market balance AT



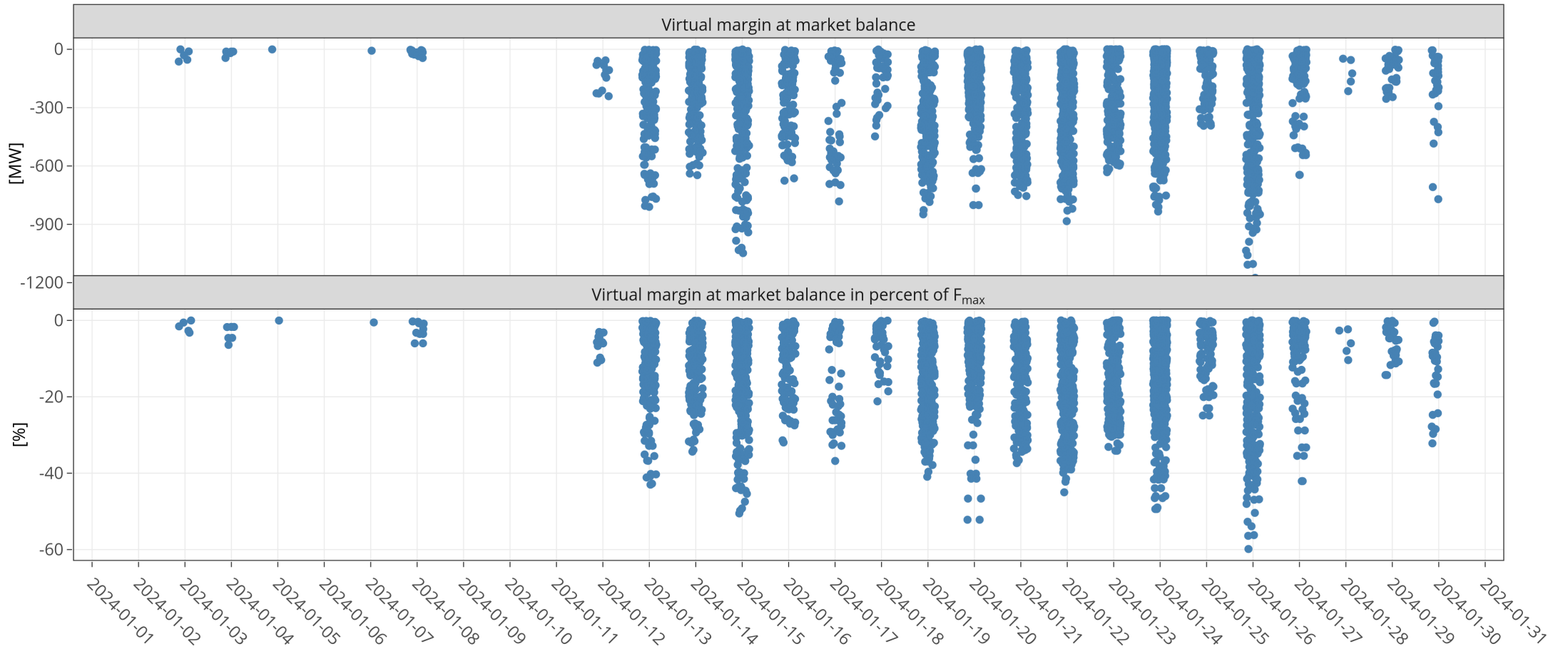
KPI 6b: Virtual margins at market balance BE



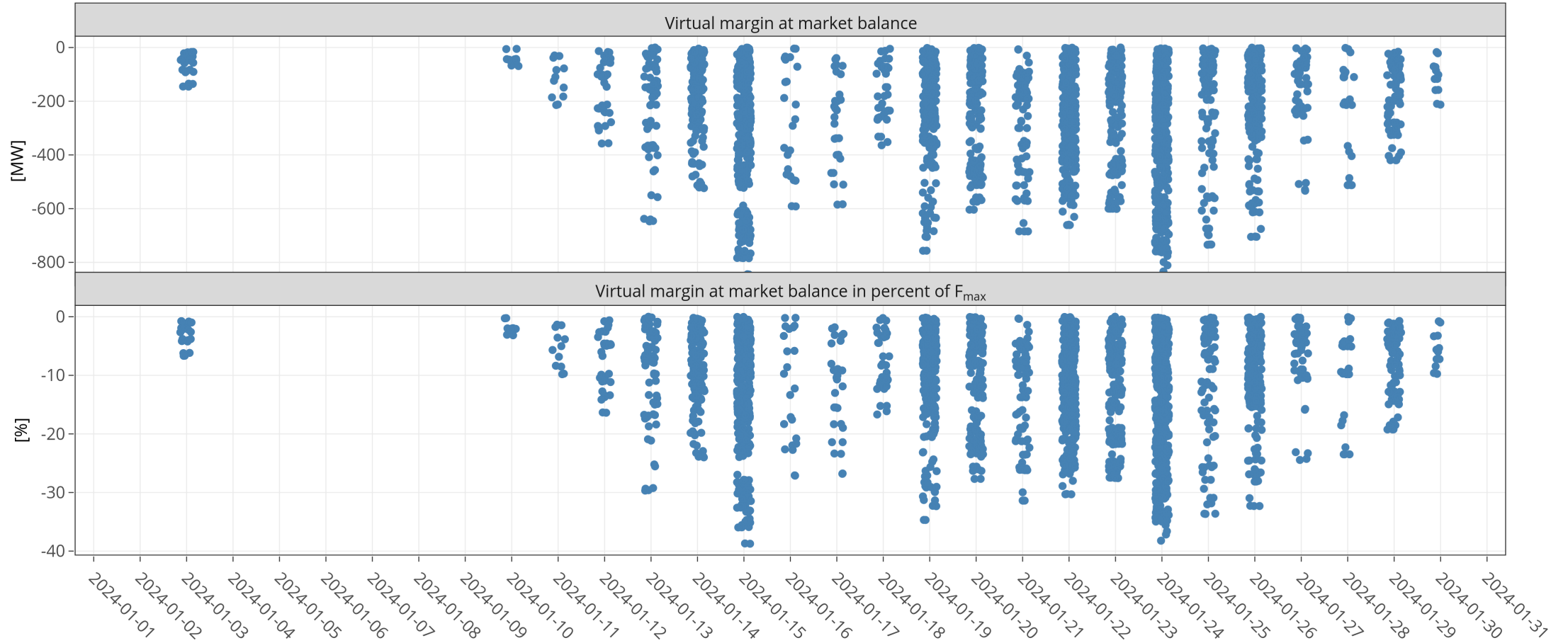
KPI 6b: Virtual margins at market balance CZ



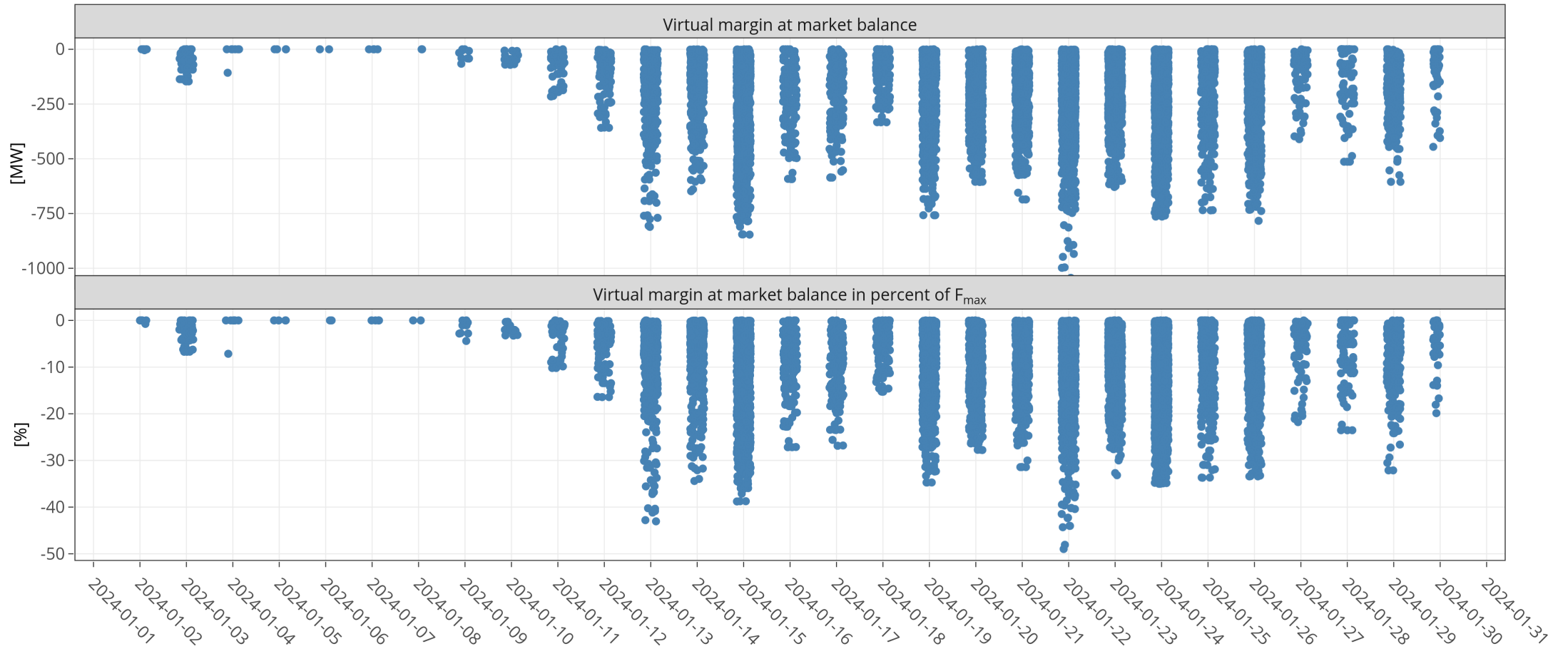
KPI 6b: Virtual margins at market balance D2



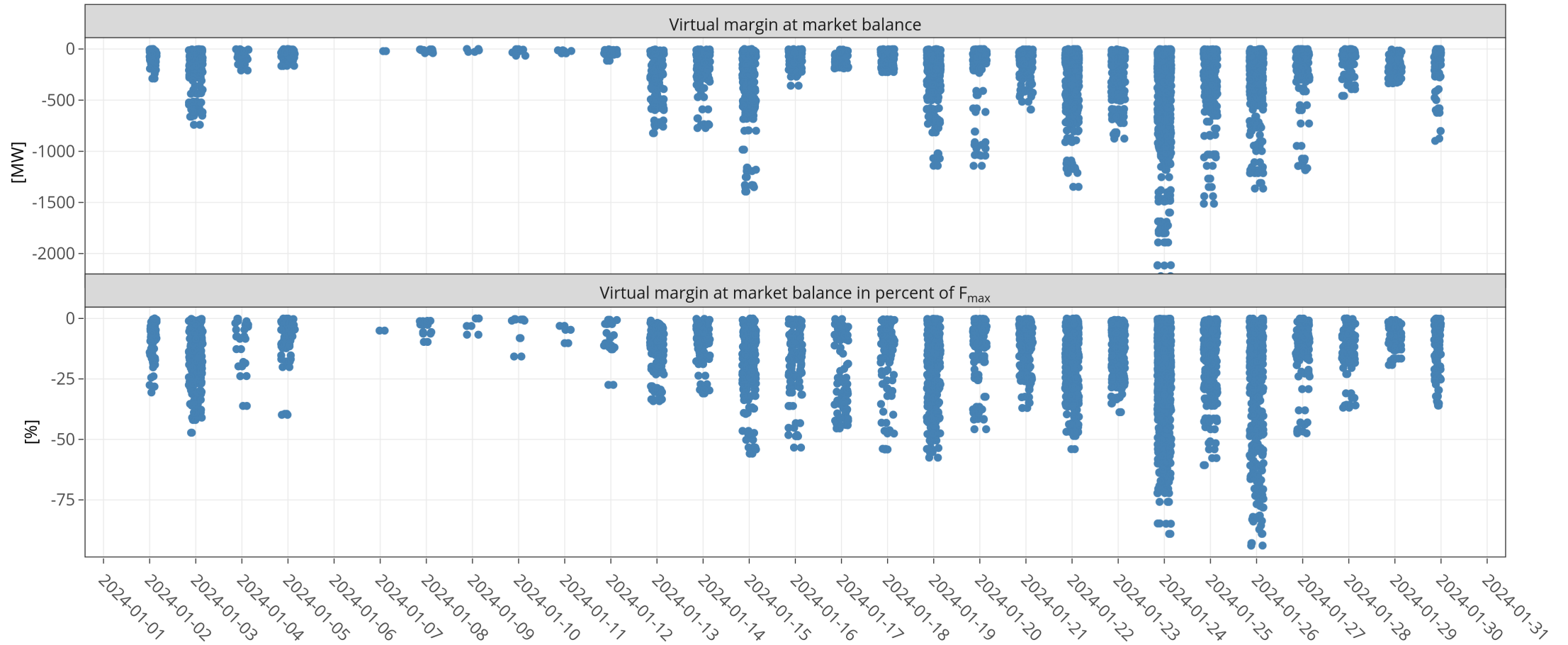
KPI 6b: Virtual margins at market balance D4



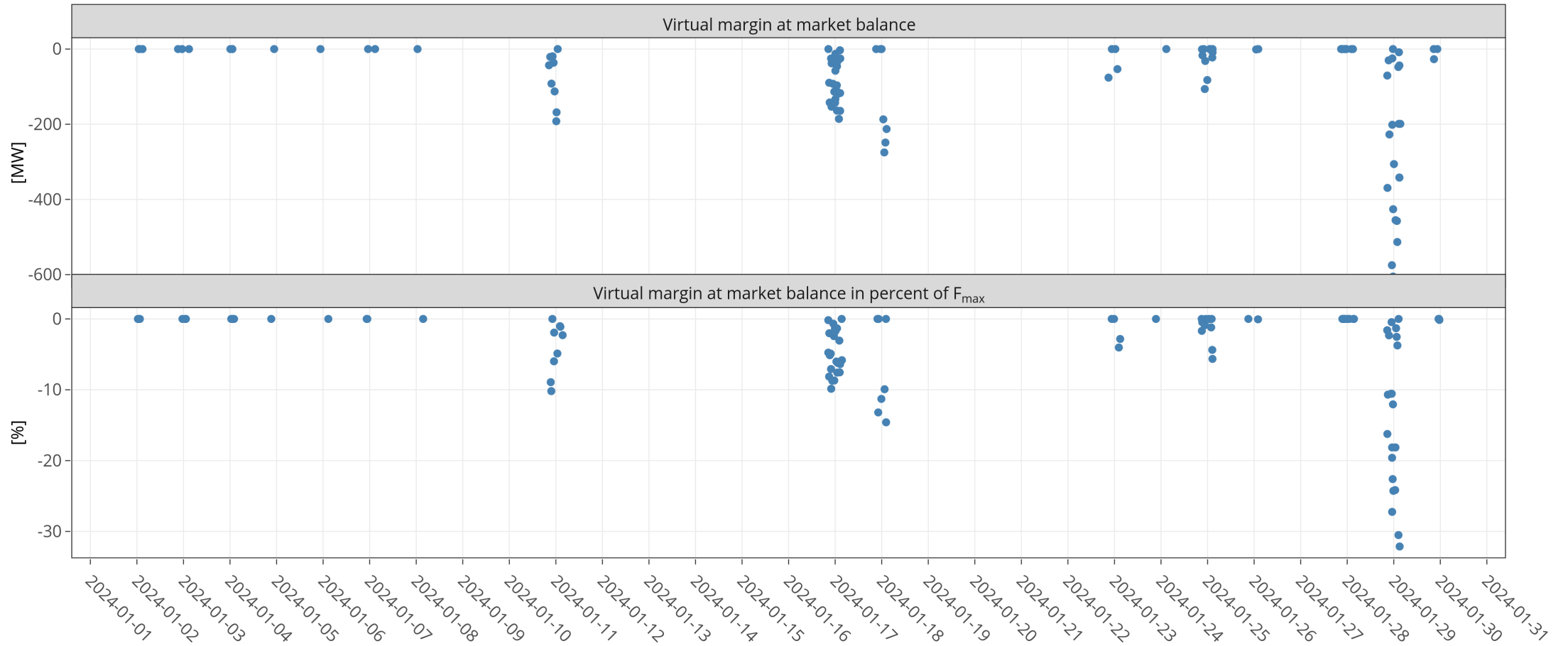
KPI 6b: Virtual margins at market balance D7



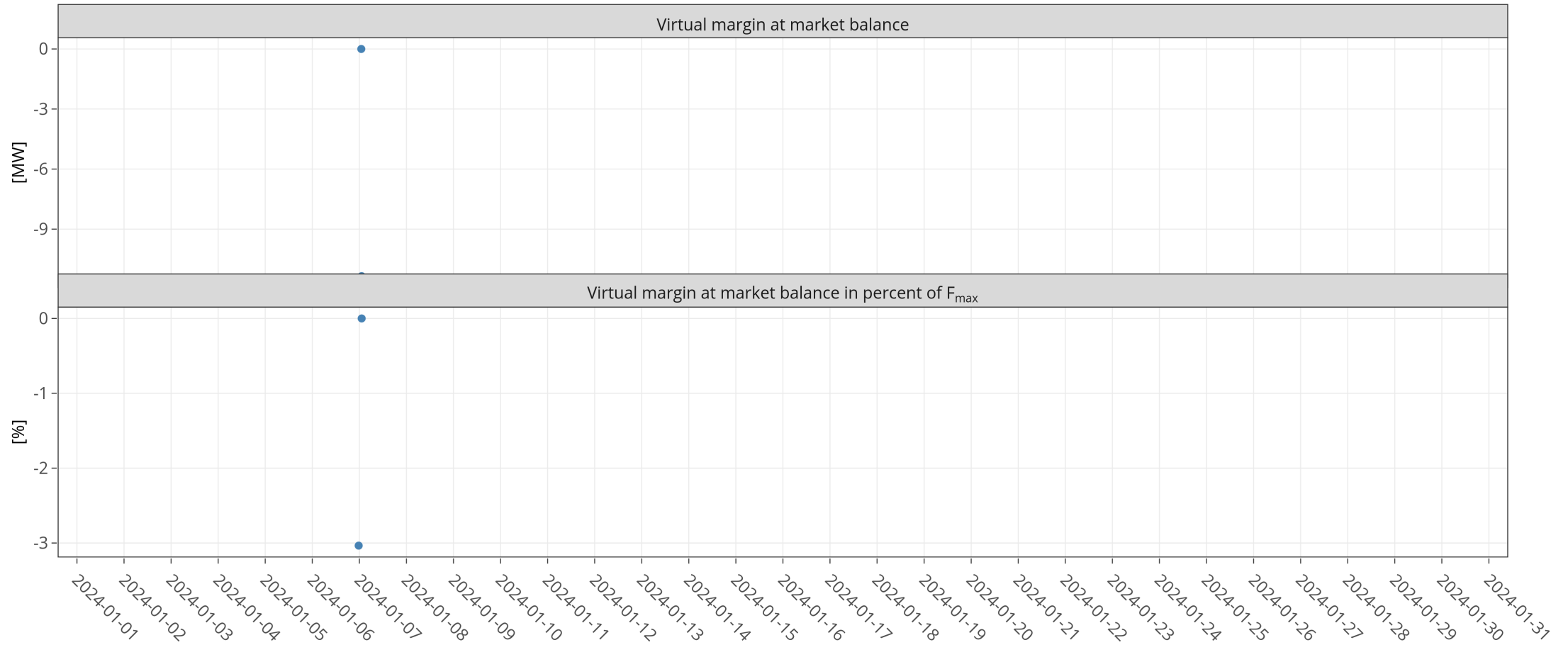
KPI 6b: Virtual margins at market balance D8



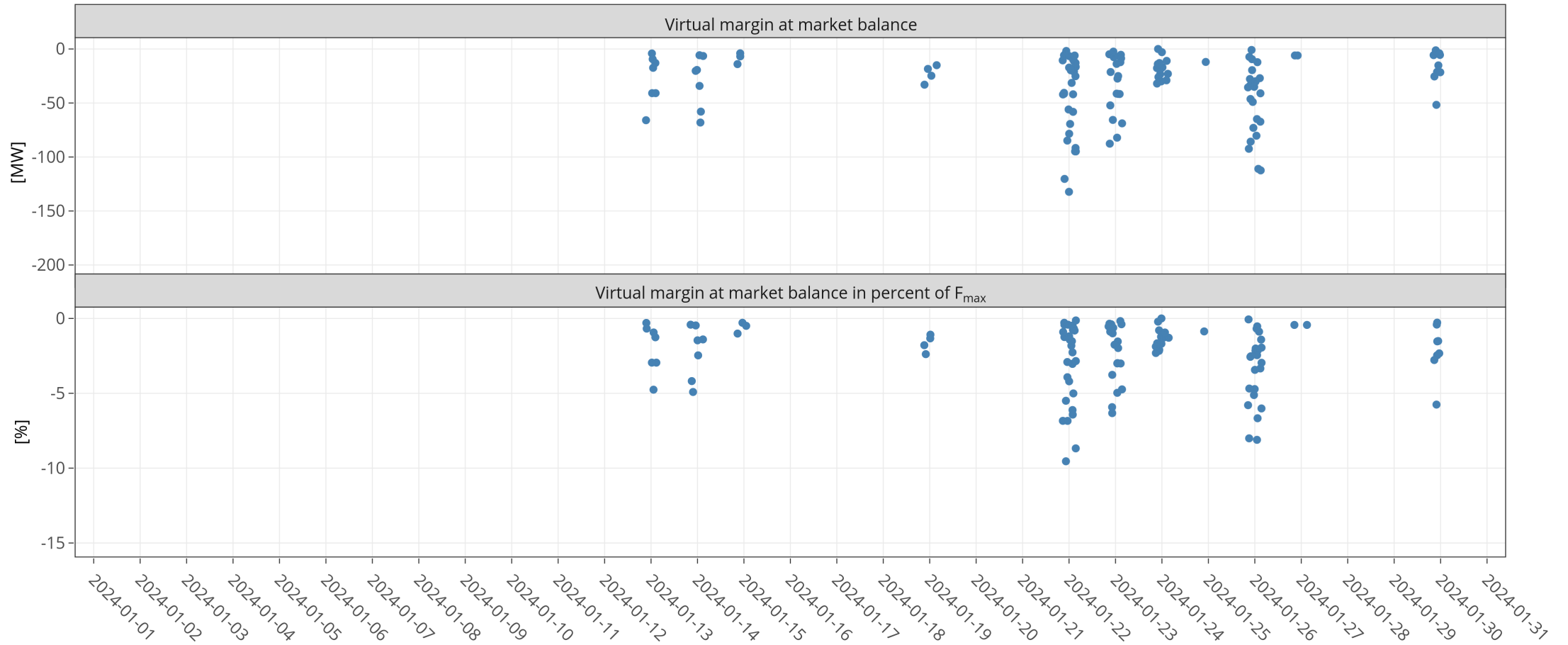
KPI 6b: Virtual margins at market balance FR



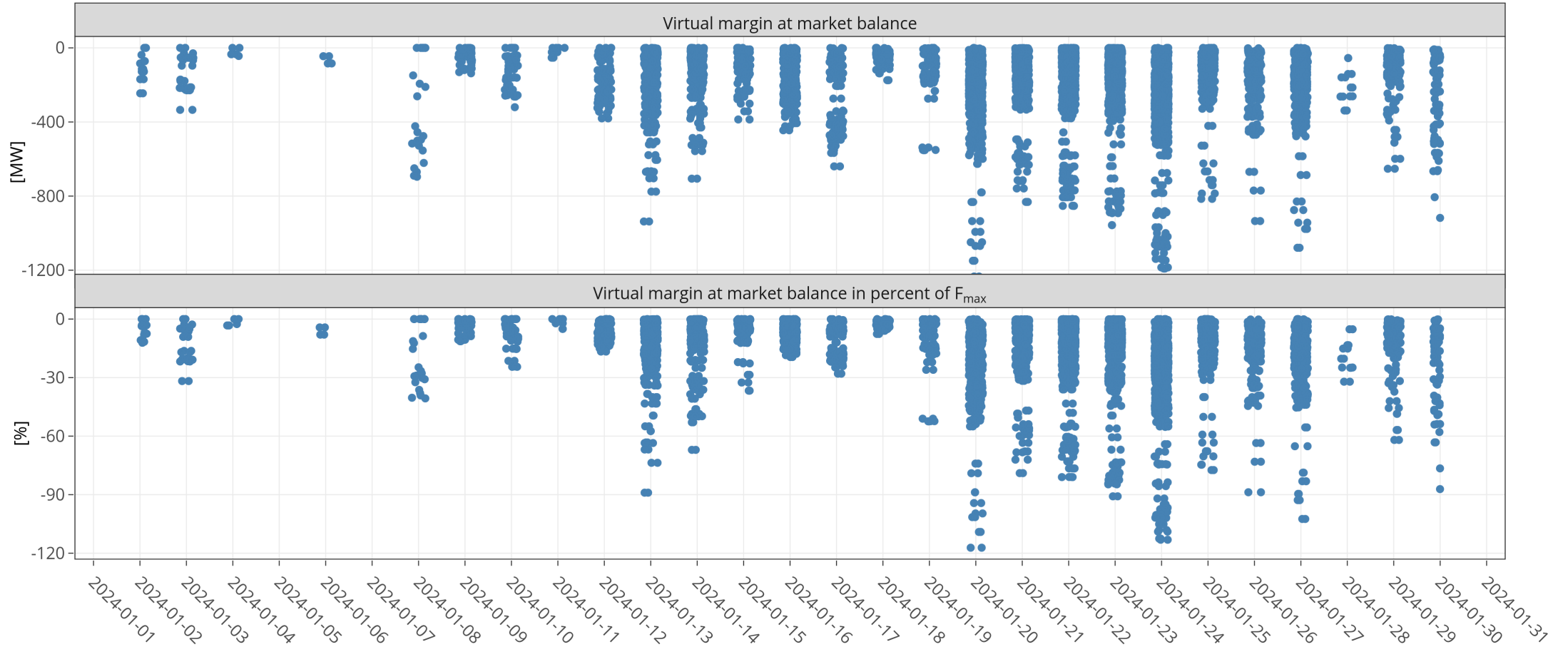
KPI 6b: Virtual margins at market balance HR



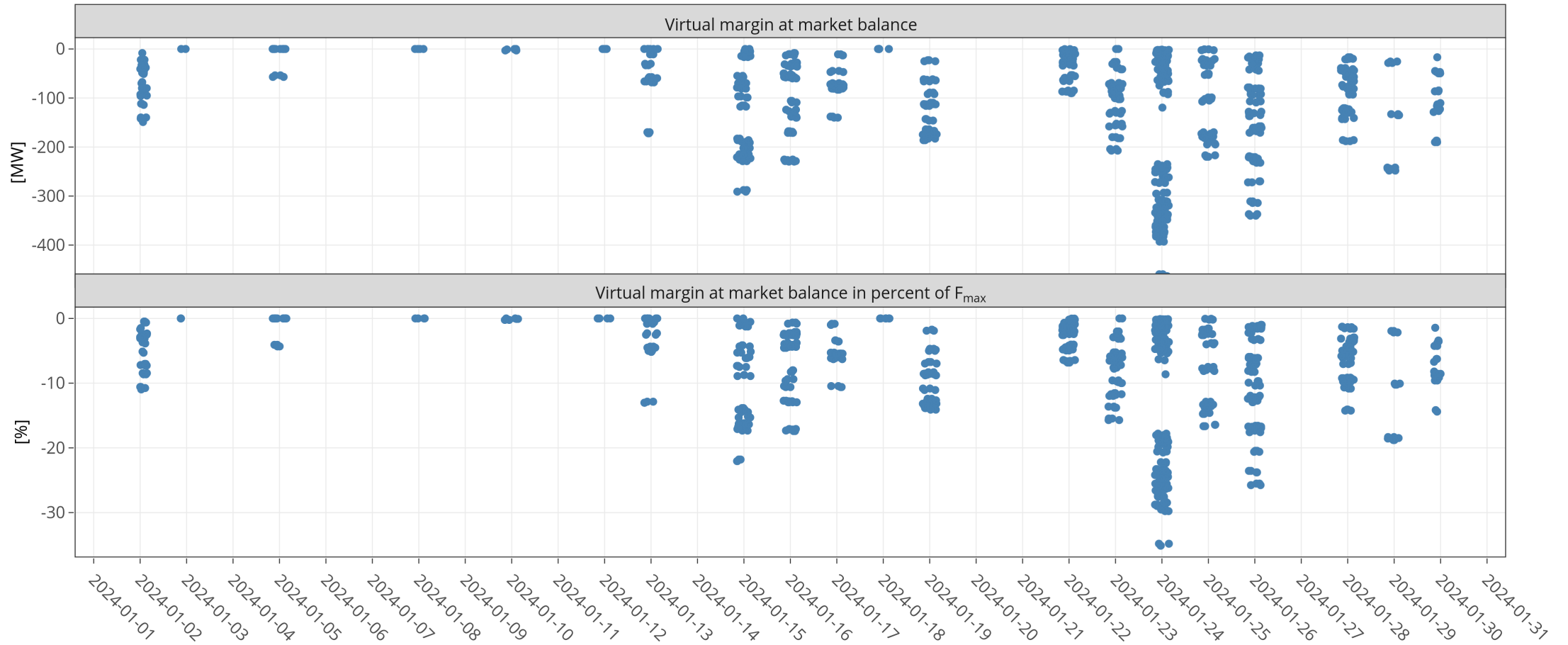
KPI 6b: Virtual margins at market balance HU



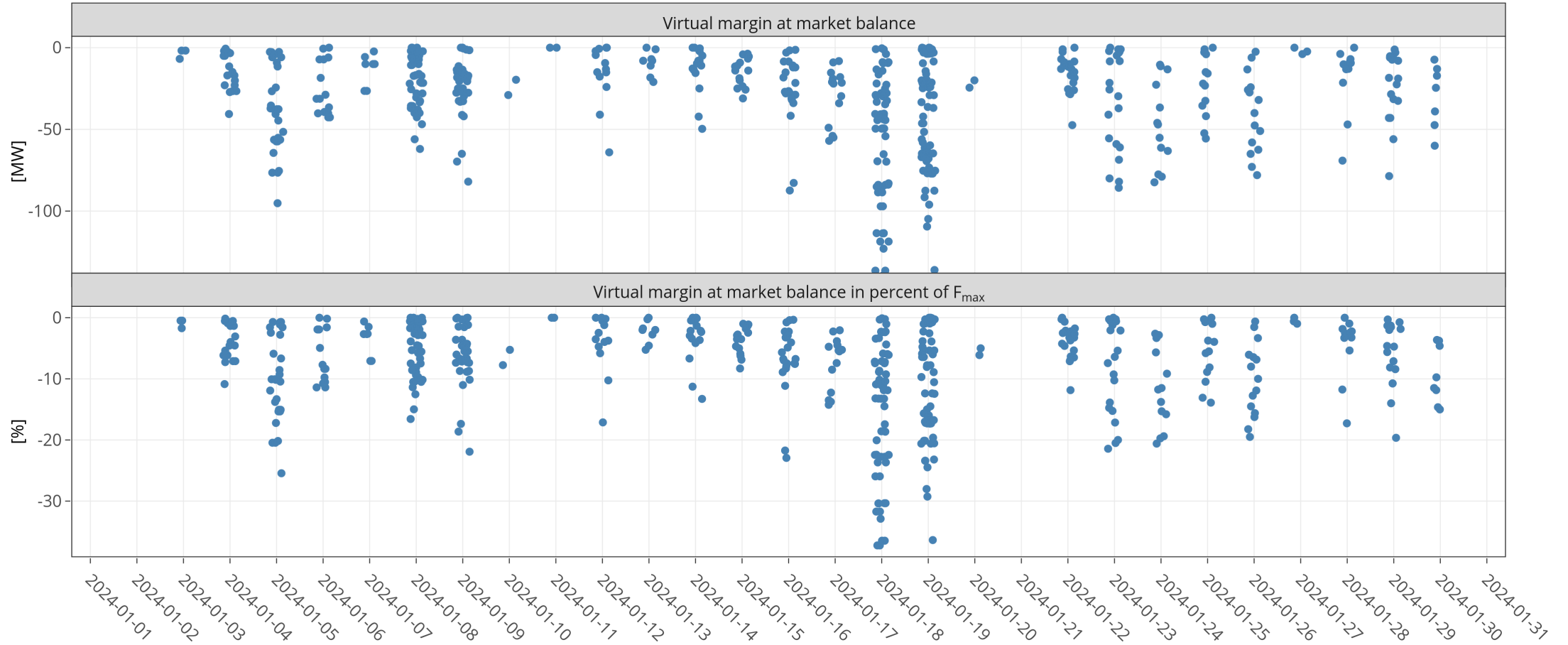
KPI 6b: Virtual margins at market balance NL



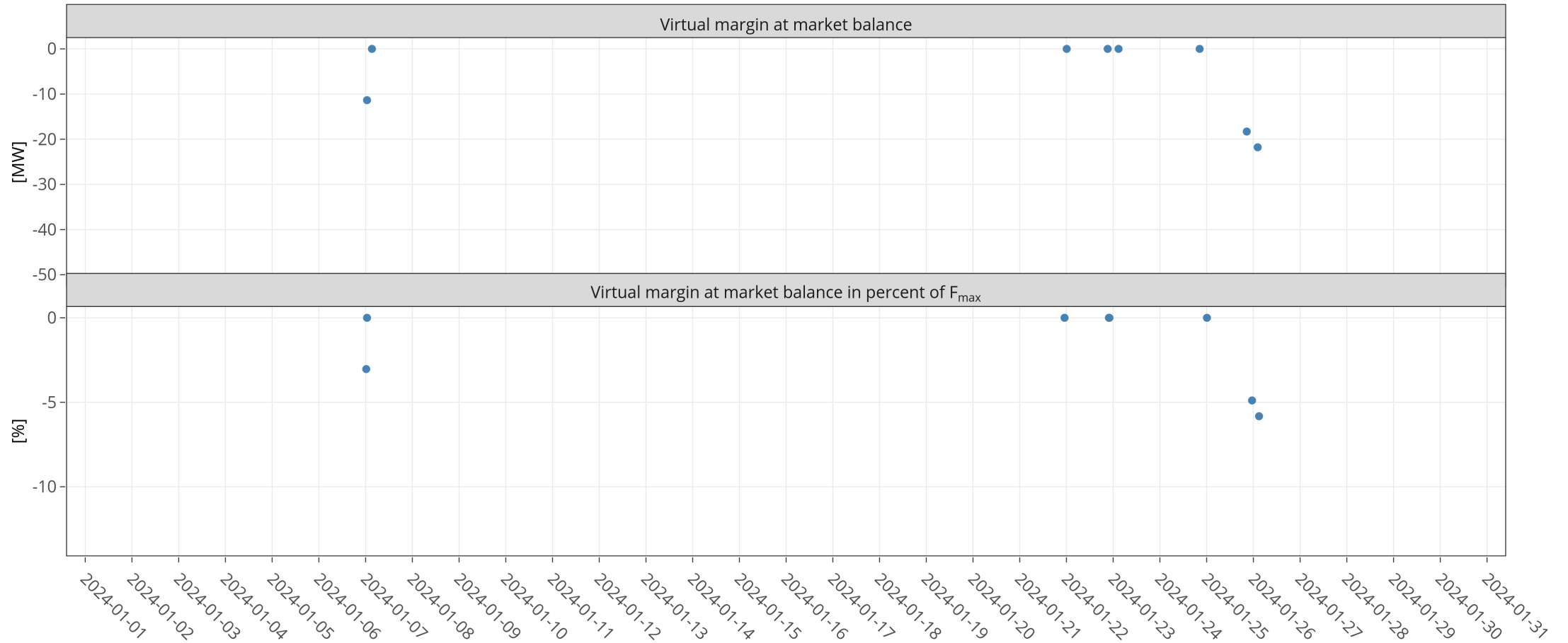
KPI 6b: Virtual margins at market balance PL



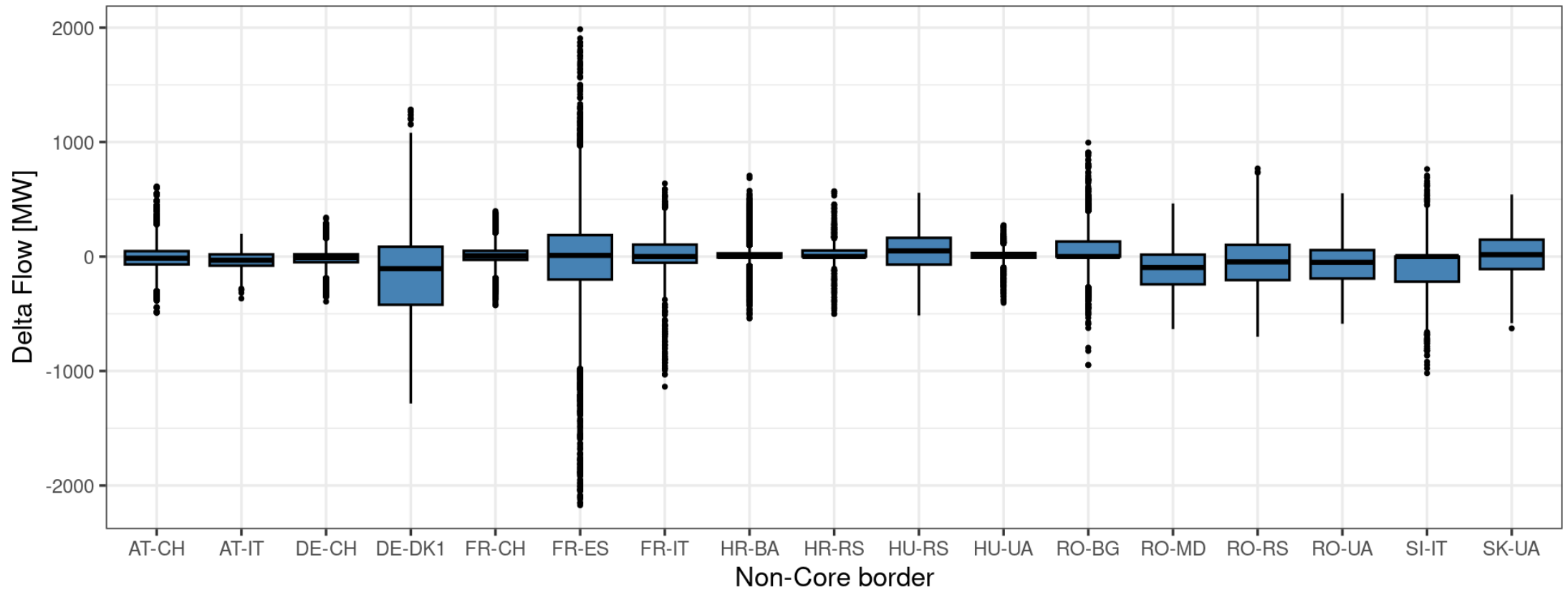
KPI 6b: Virtual margins at market balance RO



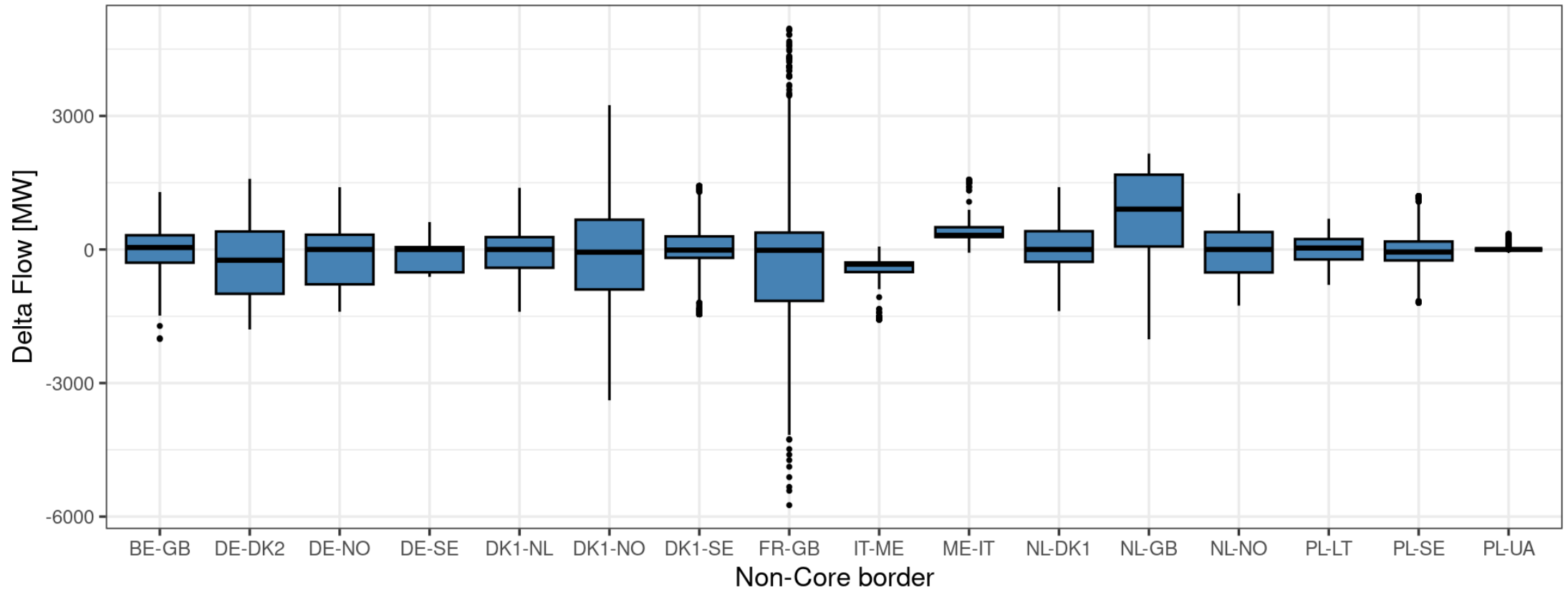
KPI 6b: Virtual margins at market balance SI



KPI 7: Non-Core exchanges AC delta flow



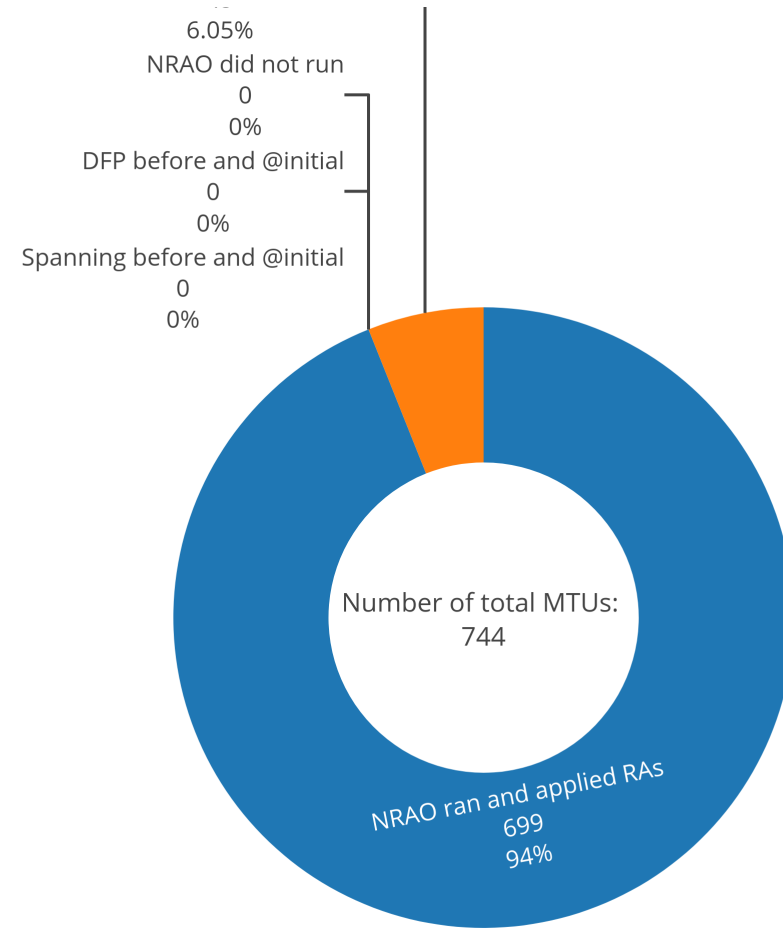
KPI 7: Non-Core exchanges DC delta flow



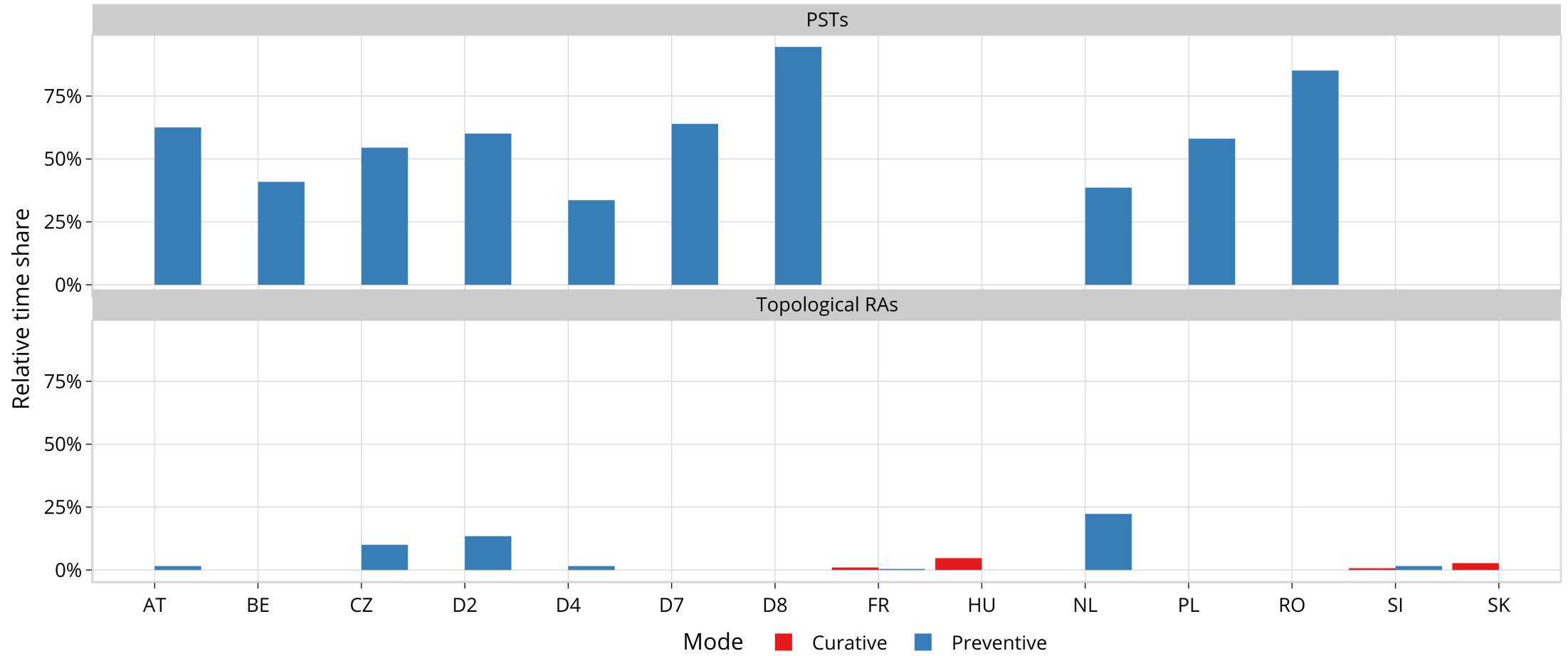
KPI 8: NRAO – Applied Remedial Action



In the following plots, the relative time share relates to the hours labeled 'NRAO Ran and Applied RAs'.

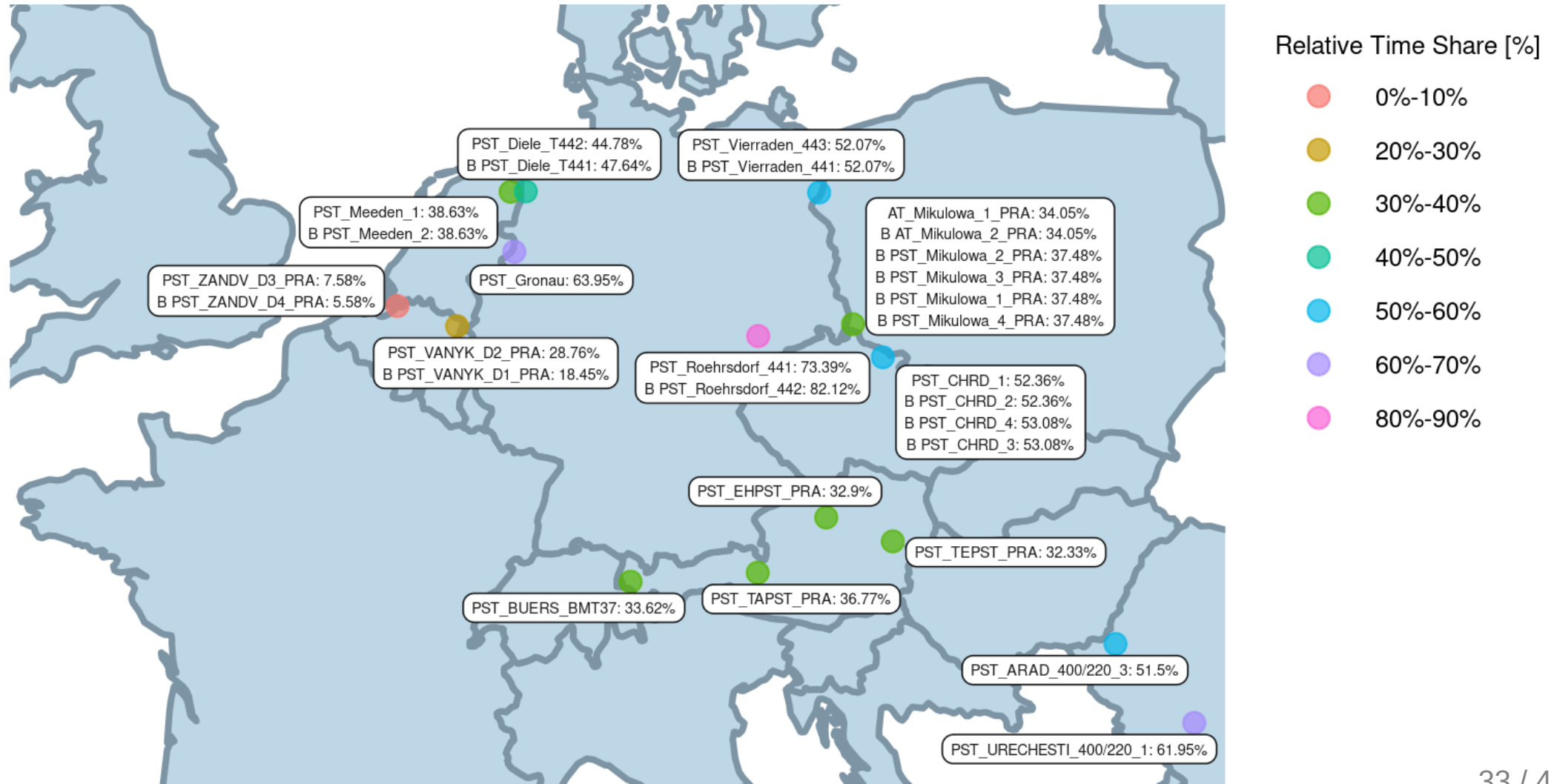


KPI 8: Relative Time Share of Applied RAs, by TSO, Type and Mode



KPI 8: Relative Time Share of Applied RAs, by TSO, Type and Mode

Relative Time Share of Applied PSTs in Preventive Mode



KPI 8: Relative Time Share of Applied RAs, by TSO, Type and Mode

Relative Time Share of Applied PSTs in Curative Mode



KPI 8: Relative Time Share of Applied RAs, by TSO, Type and Mode

Relative Time Share of Applied Topological RAs in Preventive Mode

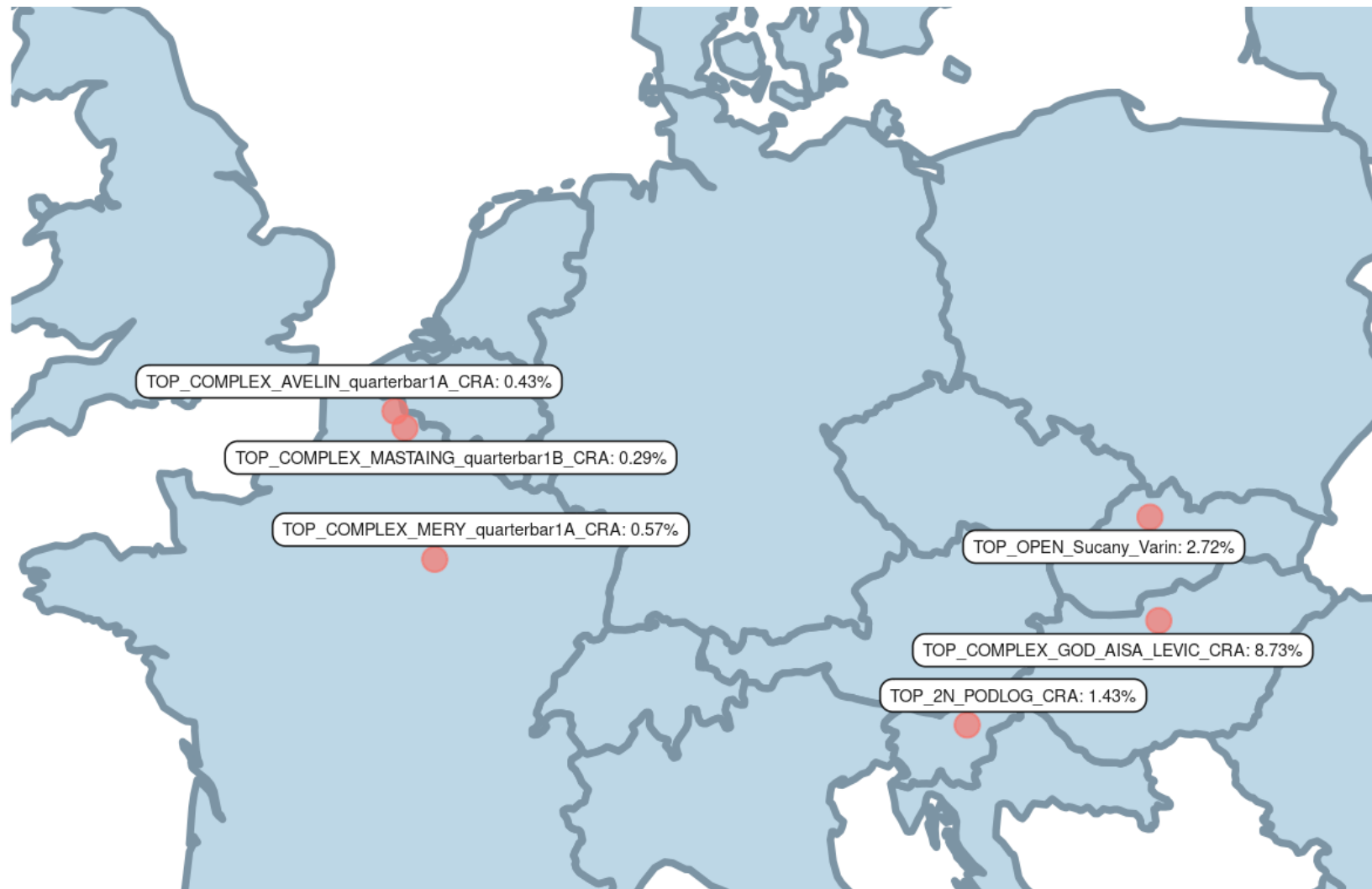


Relative Time Share [%]

- 0%-10%
- 10%-20%

KPI 8: Relative Time Share of Applied RAs, by TSO, Type and Mode

Relative Time Share of Applied Topological RAs in Curative Mode

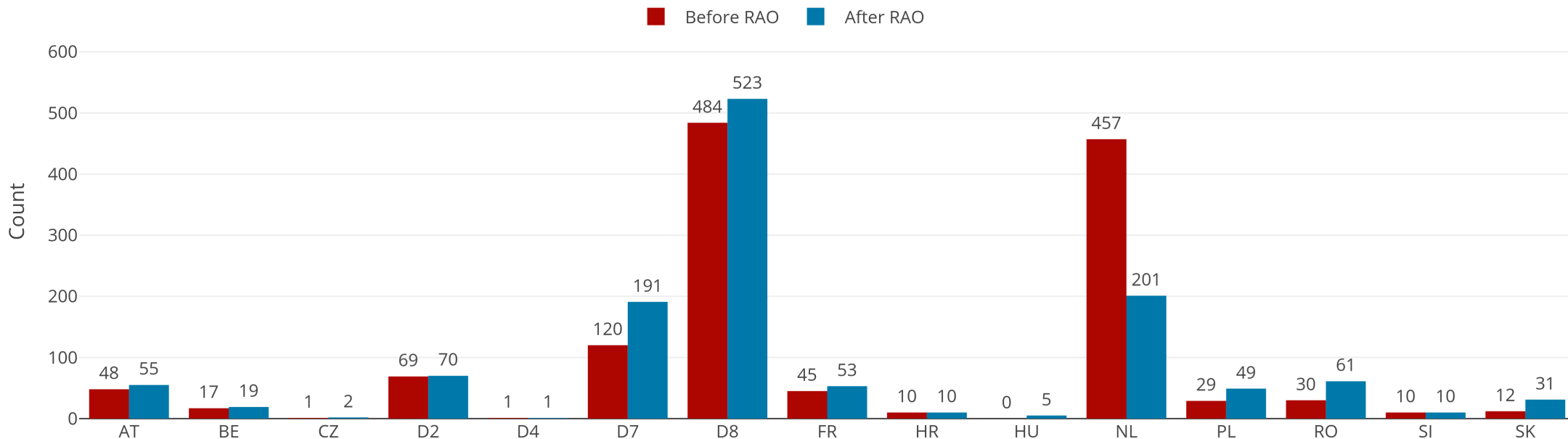


KPI 9: Most limiting CNEC per TSO (NRAO)



The graph below shows the distribution of CNECs which are the most limiting from NRAO perspective, these are the CNECs with lowest relative RAM per MTU

Distribution of Limiting CNECs per TSO



As expected, there is redistributing of the most limiting CNECs. This is because the application of Remedial Actions does not eliminate flows but re-routes, reducing the flows on some limiting CNECs and increasing the load on others, which at the end impacts also the RAM values.

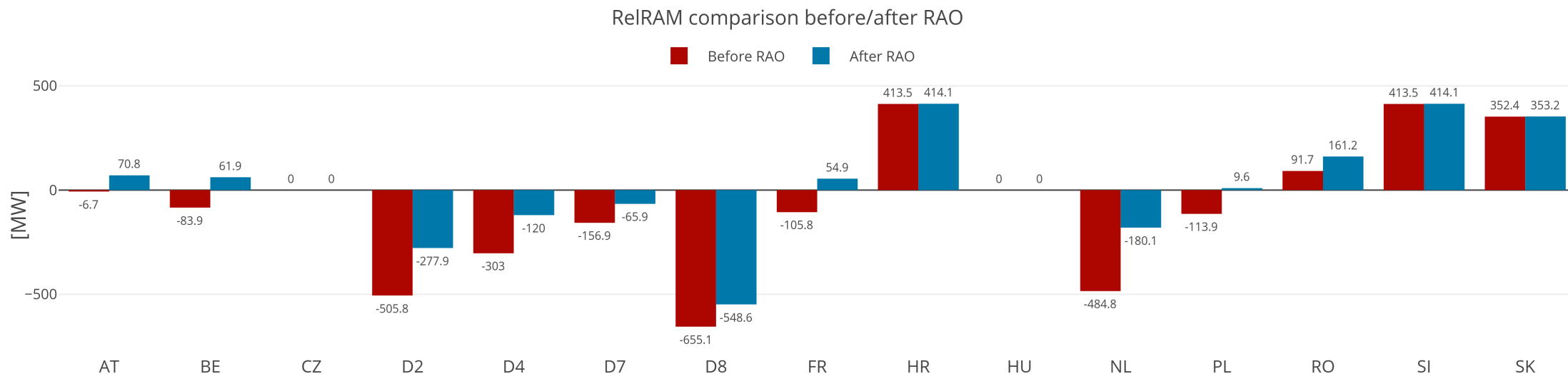
KPI 10: Average variation of relative RAM before and after NRAO



The graph shows average values of relative RAM before and after NRAO, per TSO on the most limiting CNECs from NRAO perspective. Selected CNECs before RAO are the same as after RAO, and average computed for MTUs when was used further in the process.

- Most limiting element from NRAO perspective is the one which has the lowest relative RAM per MTU
- To determine value of relative RAM, the following formula was used

$$RAM_{rel} = \begin{cases} \frac{RAM_{nrao}}{\sum_{(A,B) \in \text{neighbouring Core bidding zones pairs}} |PTDF_{A \rightarrow B, nrao}|}, & \text{if } RAM_{nrao} \geq 0 \\ RAM_{nrao}, & \text{if } RAM_{nrao} < 0 \end{cases}$$



KPI 11: Most often presolved CNEs (top 20)



CNE	Distinct hours CNE was presolved	Count of presolved CNECs	Avg RAM/Fmax	Min RAM/Fmax	Max RAM/Fmax	Max z2zPTDF	Max sum z2zPTDF
[HR-SI] 220kV Pehlin - Divaca [OPP] [HR]	744	1309	112.93%	80.21%	155.08%	0.188	0.4535
[SI-HU] 400 kV Cirkovce - Hevitz [OPP] [SI]	744	1496	74.95%	48.33%	111.18%	0.1725	0.8755
[CZ-SK] Sokolnice - Stupava [DIR] [CZ]	744	744	80.20%	66.81%	96.10%	0.2839	1.1422
[HU-HU] Gonyu - Gyor [DIR]	744	1455	73.34%	22.96%	98.34%	0.2321	1.2441
[HR-SI] 220kV Pehlin - Divaca [DIR] [HR]	744	744	55.94%	28.07%	89.84%	0.188	0.4535
[SK-SK] Gabcikovo - P.Biskupice [DIR]	744	744	80.31%	68.92%	99.11%	0.2714	0.99
[CZ-SK] Sokolnice - Krizovany [OPP] [CZ]	743	743	93.93%	77.92%	107.94%	0.2781	1.1425
[SI-HU] 400 kV Cirkovce - Hevitz [DIR] [SI]	741	1426	106.09%	68.80%	128.58%	0.1725	0.8755
[SK-HU] Gabcikovo - Gonyu [OPP] [HU]	737	1017	91.36%	66.96%	127.13%	0.2928	1.0148
[RO-RO] TR Rosiori 400/220 1 [DIR]	736	742	37.64%	19.00%	70.25%	0.1173	0.1929
[CZ-SK] Liskovec - P. Bystrica [OPP] [CZ]	733	733	94.84%	71.08%	128.31%	0.0735	0.2546
[AT-AT] Westtirol 1 - Westtirol 2 WTRHU41 [OPP]	732	1250	47.46%	19.80%	112.60%	0.1894	0.8534
[FR-D7] Vigy - Ensdorf VIGY2 S [DIR] [D7]	730	755	47.09%	19.90%	82.86%	0.2243	0.5958
[AT-SI] Obersielach - Podlog 247 [DIR] [AT]	730	762	90.29%	31.33%	129.88%	0.1883	0.542
[SK-HU] Gabcikovo - Gonyu [DIR] [HU]	729	729	82.52%	59.86%	106.06%	0.2928	1.0148
[HU-HU] Gonyu - Gyor [OPP]	728	734	112.24%	81.73%	159.57%	0.2321	1.2441
[CZ-D2] Hradec - Etzenricht 441 [DIR] [D2]	727	727	53.38%	46.10%	73.45%	0.1762	0.77
[CZ-SK] Nosovice - Varin [DIR] [SK]	725	2999	74.55%	49.71%	97.84%	0.3314	1.1541
[CZ-D8] Hradec - Rohrsdorf 445 [OPP] [D8]	721	721	52.29%	20.16%	88.49%	0.3022	1.2795
[SI-HU] Cirkovce - Heviz [OPP] [HU]	720	720	74.84%	61.33%	110.32%	0.2044	1.017

Note 1: The shown z2zPTDF values do not correspond to the maximum zone-to-zone PTDFs according to equation 5 of the Day-ahead CCM and hence are not the ones used for the CNEC Selection. The z2zPTDFs are calculated only between neighbouring BZs. See KPI reading guide on JAO.

Note 2: RAM for Core exchanges can be higher than 100% due to the relieving effect of Fuaf: $RAM_{Core} = CEP_{target} - Fuaf$. So if Fuaf is very negative you can get above 100%.

KPI 12: Most limiting CNEs (top 20)



CNE	Distinct hours CNE has shadow price	Count of CNECs with shadow price	Max shadow price [€/MW]	Avg RAM/Fmax	Min RAM/Fmax	Max RAM/Fmax	Max z2zPTDF
[D8-PL] Mikulowa PST1 [OPP] [PL]	213	213	240.22	48.48%	37.12%	68.18%	0.3379
[NL-D2] Meeden-Diele 380 Z [OPP] [NL]	171	171	517.97	24.53%	19.94%	78.92%	0.2462
[RO-RO] TR Rosiori 400/220 1 [DIR]	156	156	971.54	28.29%	19.25%	70.00%	0.1173
[FR-D7] Vigy - Enseldorf VIGY2 S [DIR] [D7]	153	153	247.12	43.64%	19.90%	71.82%	0.2231
[CZ-D8] Hradec - Rohrsdorf 445 [OPP] [D8]	120	120	276.9	45.20%	20.16%	52.23%	0.3022
[D8-D8] Neuenhagen - Vierraden 304 [DIR] [D8]	93	93	807	45.94%	19.90%	62.11%	0.0992
[NL-NL] Krimpen a/d IJssel-Geertruidenberg 380 W [DIR]	69	69	161.91	31.62%	19.95%	74.98%	0.4601
[NL-BE] Rilland-Zandvliet 380 G [DIR] [NL]	59	59	130.28	62.10%	44.88%	89.48%	0.5412
[NL-D2] Meeden-Diele 380 Z [DIR] [NL]	55	55	175.58	46.34%	19.94%	100.28%	0.2308
[SK-SK] V.Dur - Levice 1 [DIR]	50	50	454.84	42.33%	37.79%	47.52%	0.188
[SK-HU] Levice - God [DIR] [HU]	40	40	415.92	54.15%	42.14%	68.61%	0.2354
[D2-D2] Altheim - Sittling 219 [OPP]	32	32	498.93	79.29%	37.30%	95.36%	0.0635
[CZ-SK] Nosovice - Varin [DIR] [SK]	30	30	200.7	56.53%	49.71%	67.89%	0.307
[NL-NL] Krimpen a/d IJssel-Geertruidenberg 380 Z [DIR]	29	29	88.68	38.13%	29.05%	50.48%	0.38
[RO-RO] Resita - Timisoara c1 [DIR]	24	24	409.95	28.01%	20.32%	41.44%	0.097
[SI-AT] 220 kV Podlog - Obersielach [OPP] [SI]	21	21	139.72	82.33%	60.16%	130.21%	0.1524
[AT-AT] Westtirol 1 - Westtirol 2 WTRHU41 [OPP]	19	19	81.66	27.63%	19.90%	67.40%	0.1872
[NL-NL] Diemen-Lelystad 380 W [OPP]	15	15	273.66	27.52%	19.97%	36.67%	0.183
[PL-PL] Krosno Iskrzynia - Rzeszow [OPP]	15	15	313.86	49.66%	46.17%	67.33%	0.3437
[D7-D7] Buerstadt - Lamsheim BUERST W [DIR]	10	10	60.19	46.50%	20.04%	53.65%	0.1457

Note 1: The RAM values (expressed as % of Fmax) should not be interpreted as "the capacities offered by the Core TSOs to the market coupling". Indeed, since the introduction of Ext LTA inclusion Euphemia performs an optimization where it takes a portion of the FB domain and a portion of the LTA domain to maximize welfare. The RAM value shown in this KPI report correspond to the "portion of the FB domain" resulting from this optimization

Example:

- RAM = 500MW
- Portion of FB Domain = 40%
- RAM offered by Core TSOs = $400\text{mW}/0.4 = 1250\text{MW}$

KPI 13 : Allocation Constraints - Poland



	# MTUs
AC was limiting MC	315
AC < 0 MW	114
AC = 0 MW	193
AC > 0 MW	8

	PL AC Import [MW]	PL AC Export [MW]
Avg.	-1767.5	4697.14
Min.	-9873.0	0.00
Max.	0.0	15046.00

